

# CorelDRAW X7 Setup for Universal Laser Systems Inc

1.If you have not already done so, install CorelDraw X7 on your computer.

2.Open CorelDraw and start a new blank document.

Open CorelDraw X7→ File→New

3. (See Figure 1 below)

On the Create a New Document screen, click on the landscape orientation (the sideways rectangle). If you would like the drawing units in metric, choose millimeters from the drop down list. Now type in the page width and height that matches your laser platform (Example, if you have a VLS 4.60 system then your page dimensions will be 18” high by 24” wide. Set the primary color mode to RGB then select the checkbox that reads “Do not show this dialog again.” Then select OK

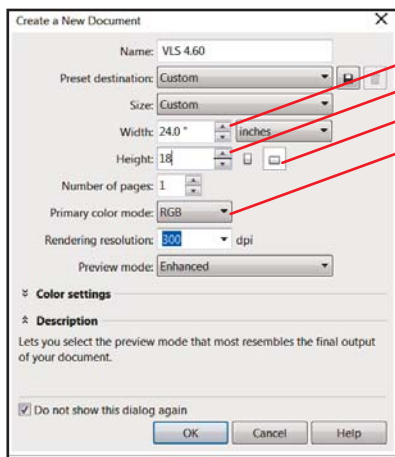


Figure 1

4.(See Figure 2 below)

## Install the Custom Universal Laser Color Palet

Select the Drop down Menu: Window→ Color Palettes →Color Palette Manager

(The Color Palette Manager will then open on the left side of the screen)

## In the Color Palette manager

Palette Libraries→RGB→ Universal Laser Systems

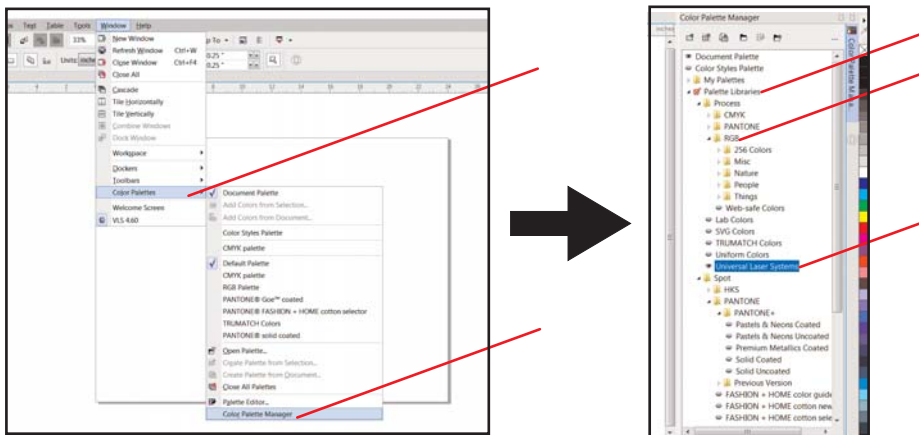


Figure 2

5. (See Figure 3 below)

We now need to adjust the vertical ruler on the left side of the screen to match the rulers in the laser system. To do this, we need to adjust the ruler's vertical origin. Double-click directly on the **vertical (side) ruler**. The **“Options”** dialog box will appear. In the **vertical origin box**, type in the same height value as you did when you set up the page height in the step 3. For example, type in 18 inches for a VLS 4.60 machine.

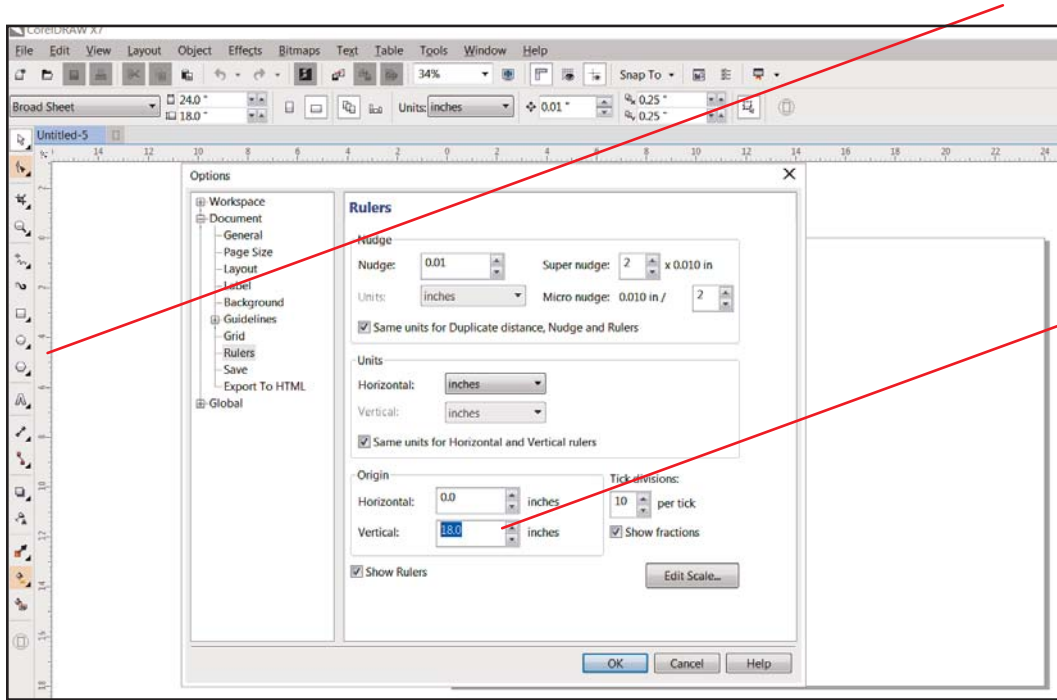


Figure 3

6. (See Figure 4 below)

The next step is to set the default value for the line width and color when drawing graphic objects. To do this, click on the **Freehand tool** and then at the top of the page you will see a drop down menu, select **“Hairline”**. When the **“Change Document Defaults”** dialog box comes up, **“Graphic”** should be the only thing selected. Click **“OK”**.

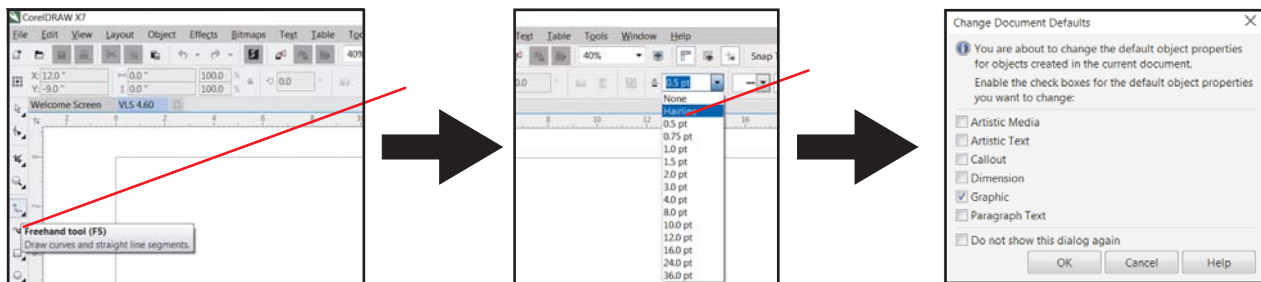


Figure 4

7. Click on the color red using the **RIGHT** mouse button. The **“Change Document Defaults”** dialog box should come up again and **“Graphic”** should be the only thing selected. Click **“OK”**

8. (See Figure 5 below)

In the top menu, click "Tools", and then click "Color Management." Then select "Default Settings". Click on the down arrow for "Presets" on the top of the page. Click "Simulate Color Management Off" from the Presets menu, and then click "OK".

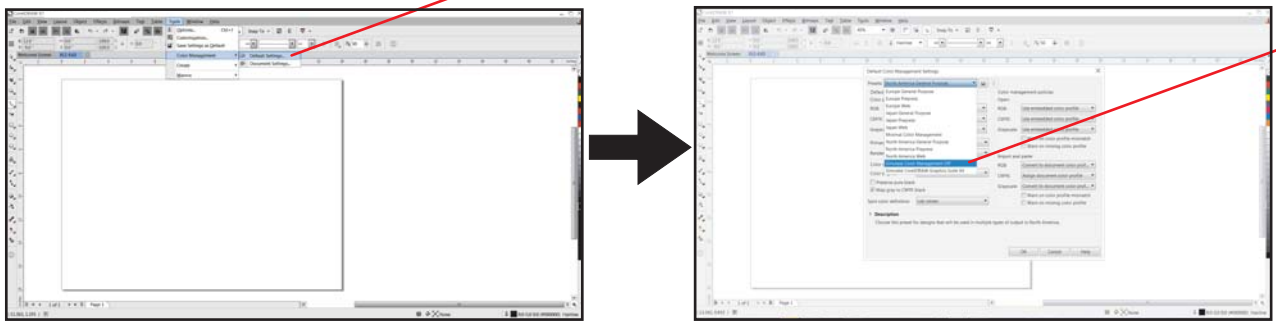


Figure 5

9. (See Figure 6 below)

Finally, at the top of the screen, click on "Tools", then "Save settings as Defaults".

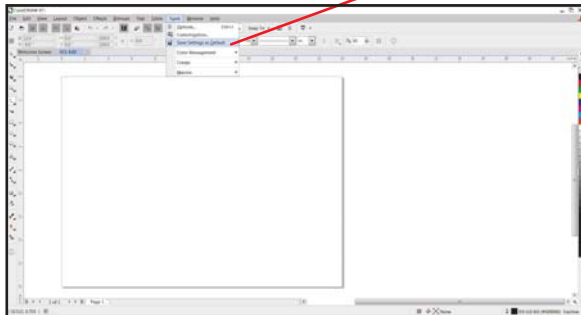


Figure 6

10. The default settings for CorelDRAW X7 are now complete. Whenever you start a new document and select "new blank document," all of the default settings that we have set up will automatically apply to the new document.

**TIP** - (See Figure 7 below)

If this is not your first version of CorelDraw and you would like to know what is new in this version, click on the "Help" menu and then click "Highlight what's New." Select your previous version to highlight all the new features. To turn this off, go to the same screen and select "no highlight."

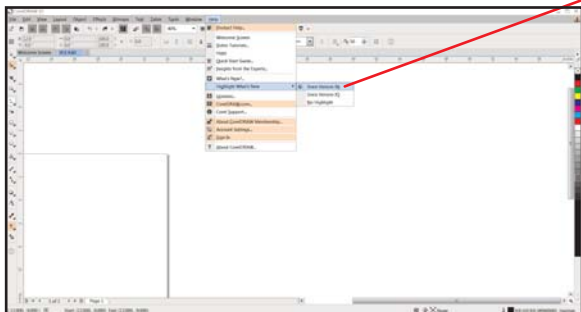


Figure 7