

Setting Up AutoCAD

Open AutoCAD

My Documents laser tile light on laser tile...

My Computer Larry Test Photo.bmp

My Network Places UcpInst-5....

Recycle Bin UCP

Internet Explorer BoxMaker-PC v1.3.5

AutoCAD 2008 1-Touch Laser Photo

Graphics Files Focus Test Pattern.cdr

ULS Drivers Autodesk Design Review

CorelDRAW X4 AutoCAD LT 2010

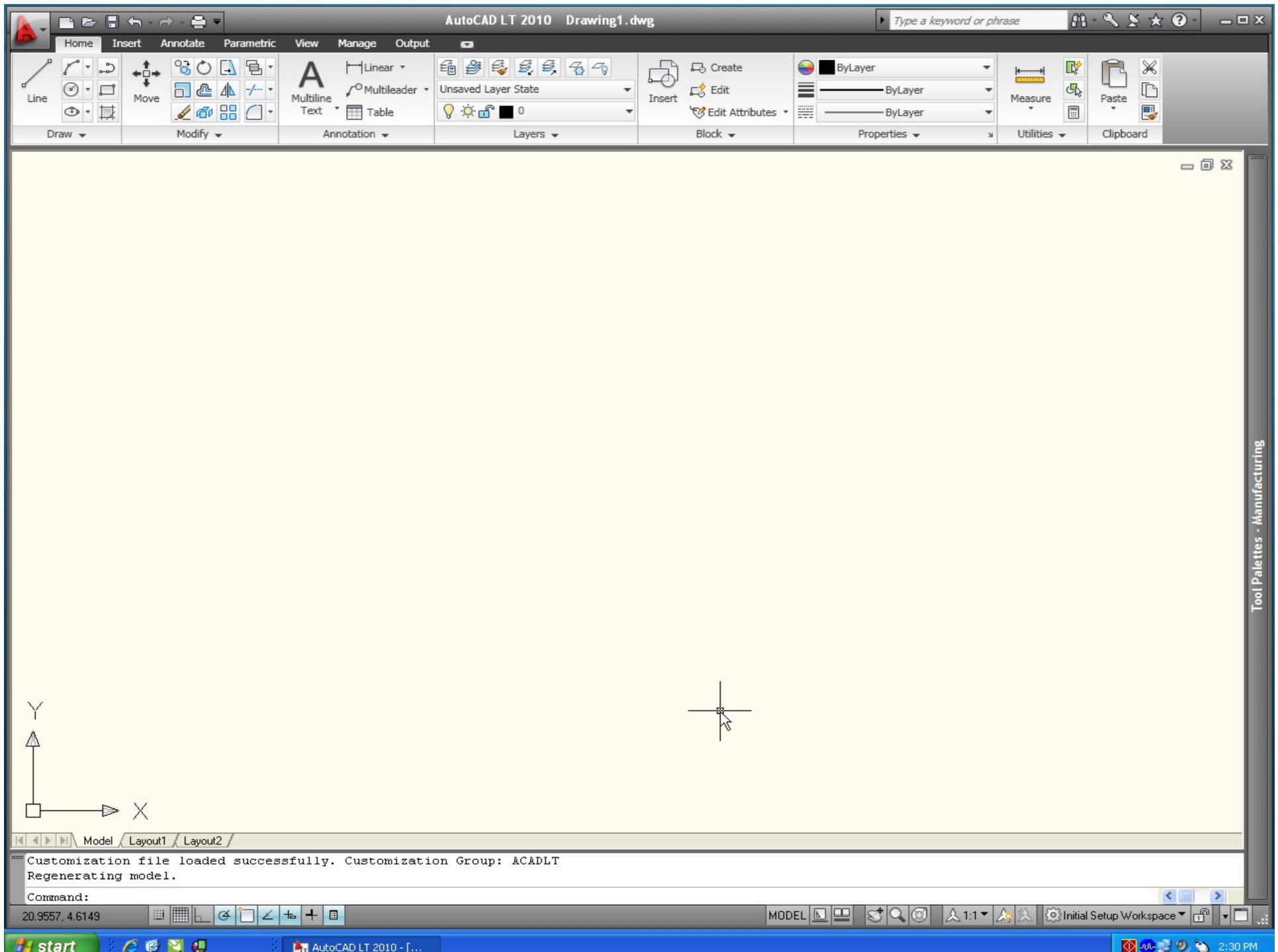
ULS User Guide_120... Adobe Photosho...

dreamstime... Fw

test.las

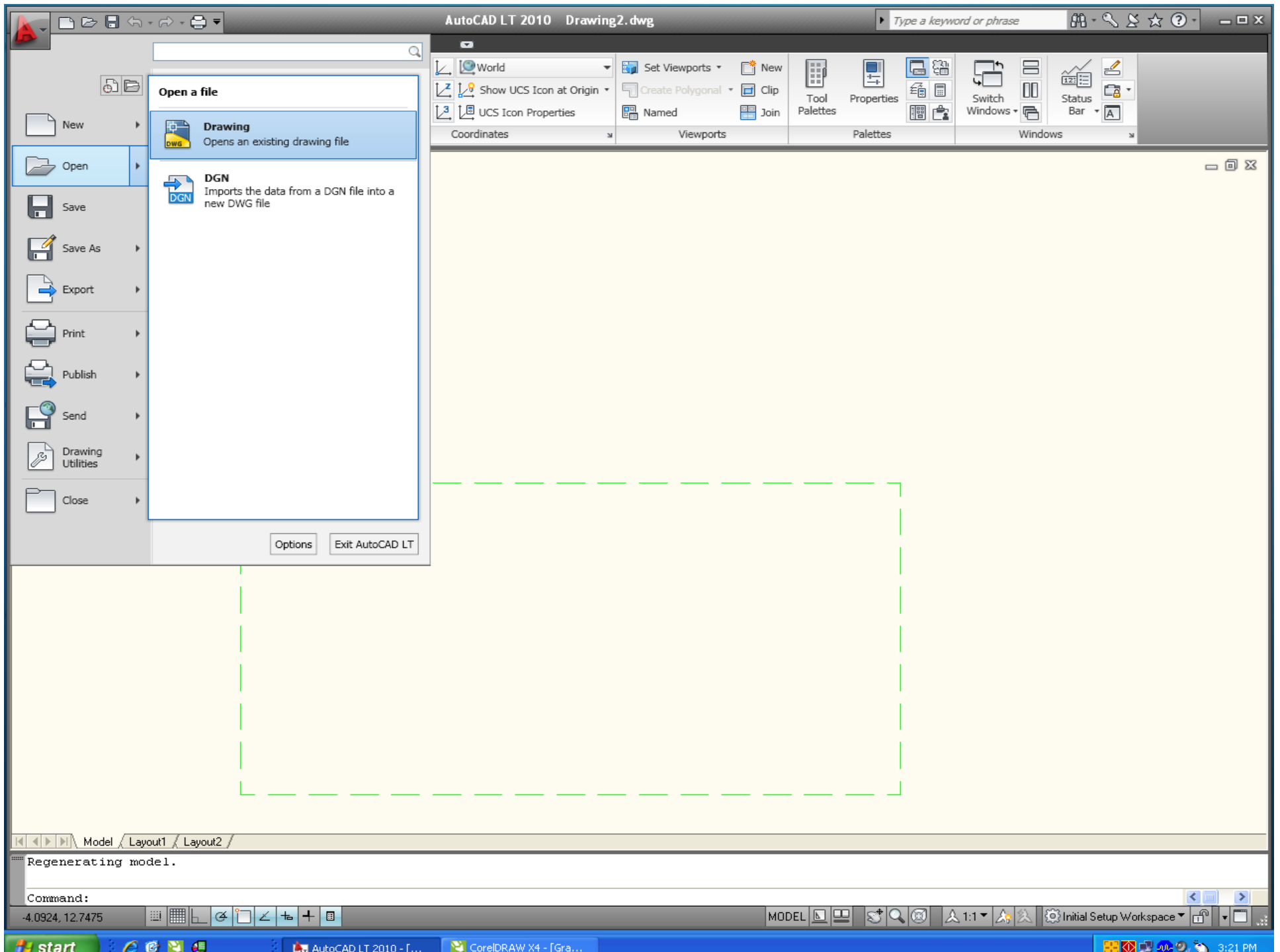
laser tile light on laser til...

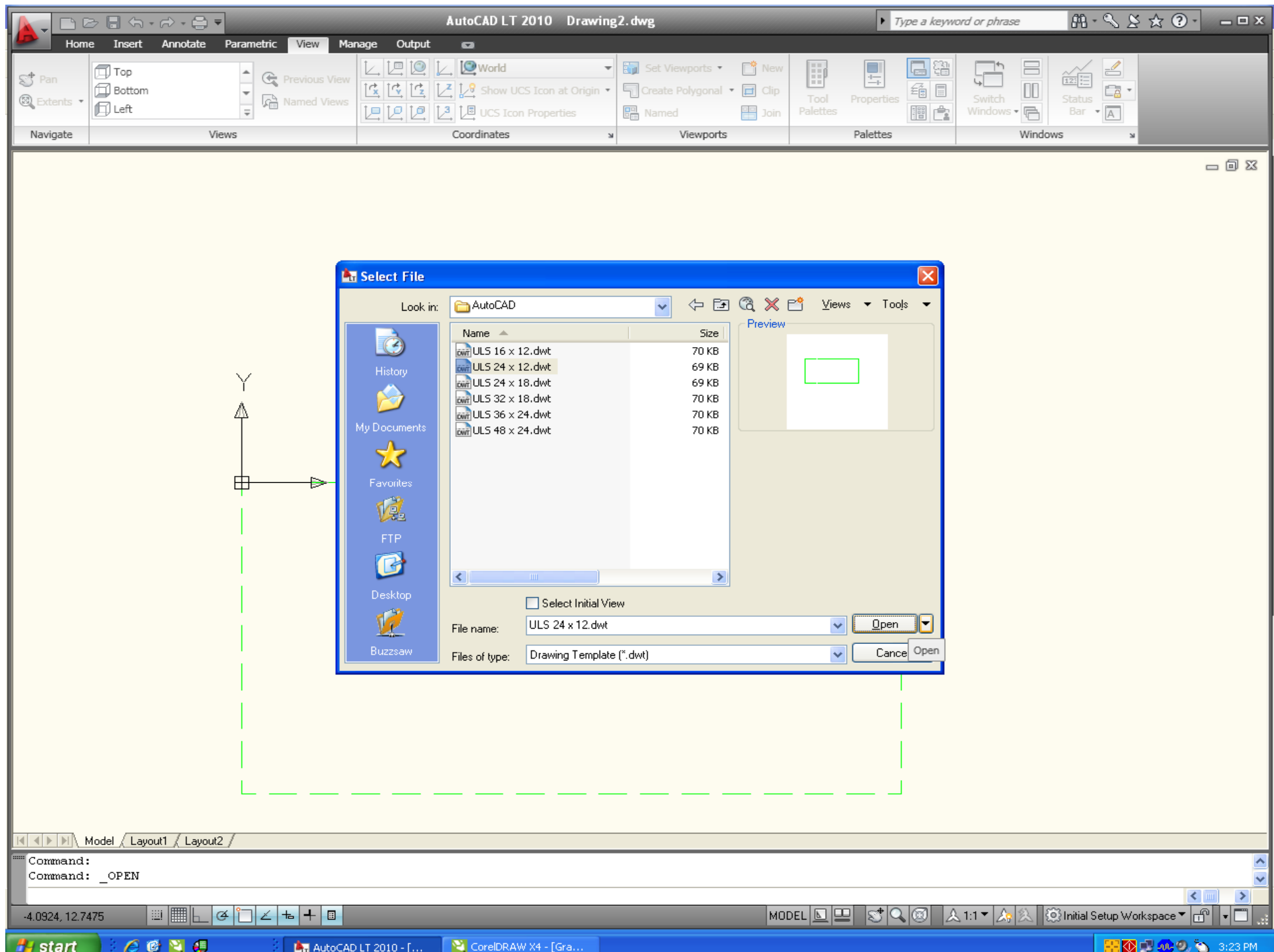


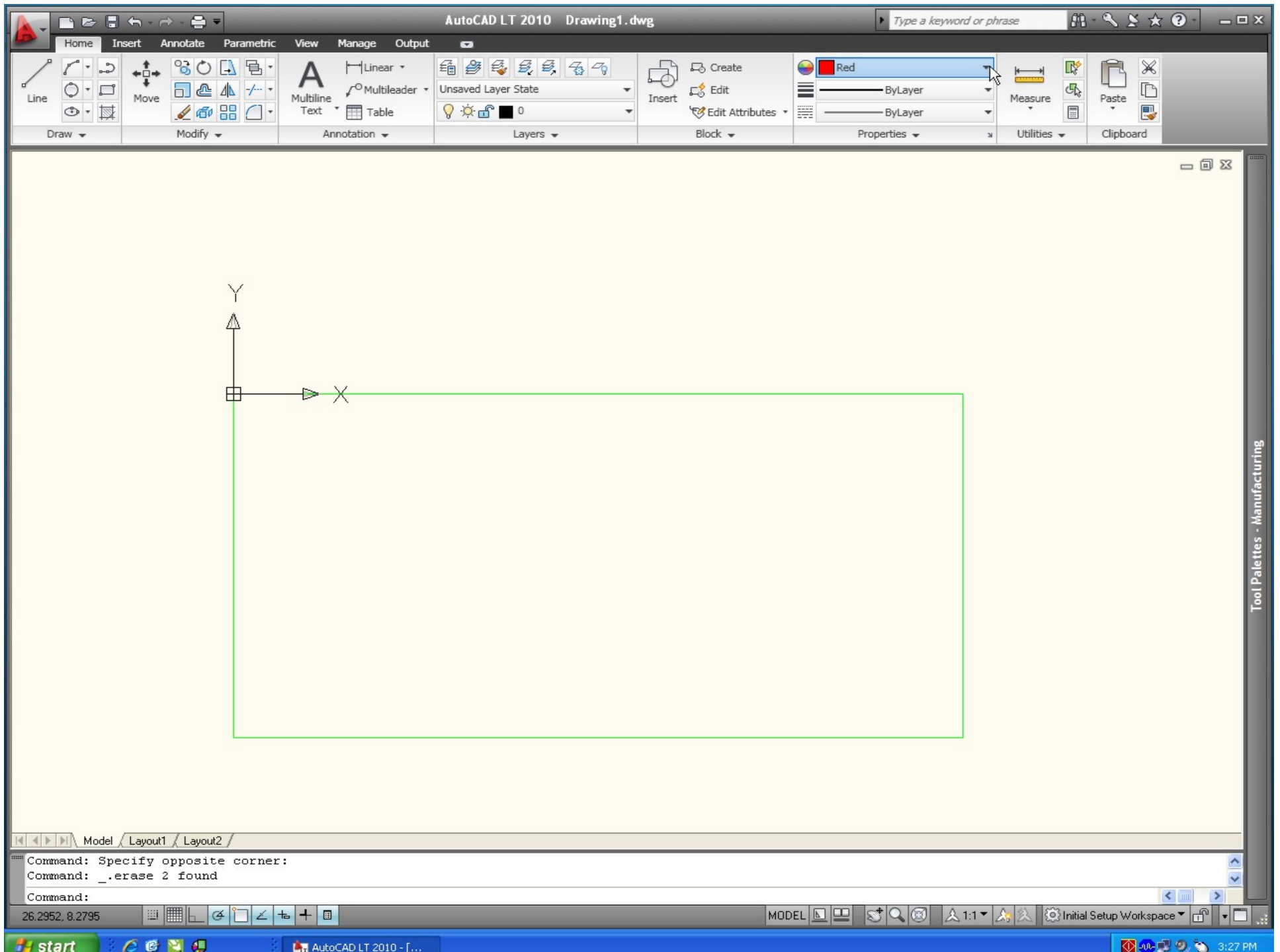


Open the pre-configured Template that matches the work area of the system you are using.

In the following slides, the 24" x 12" template is shown.

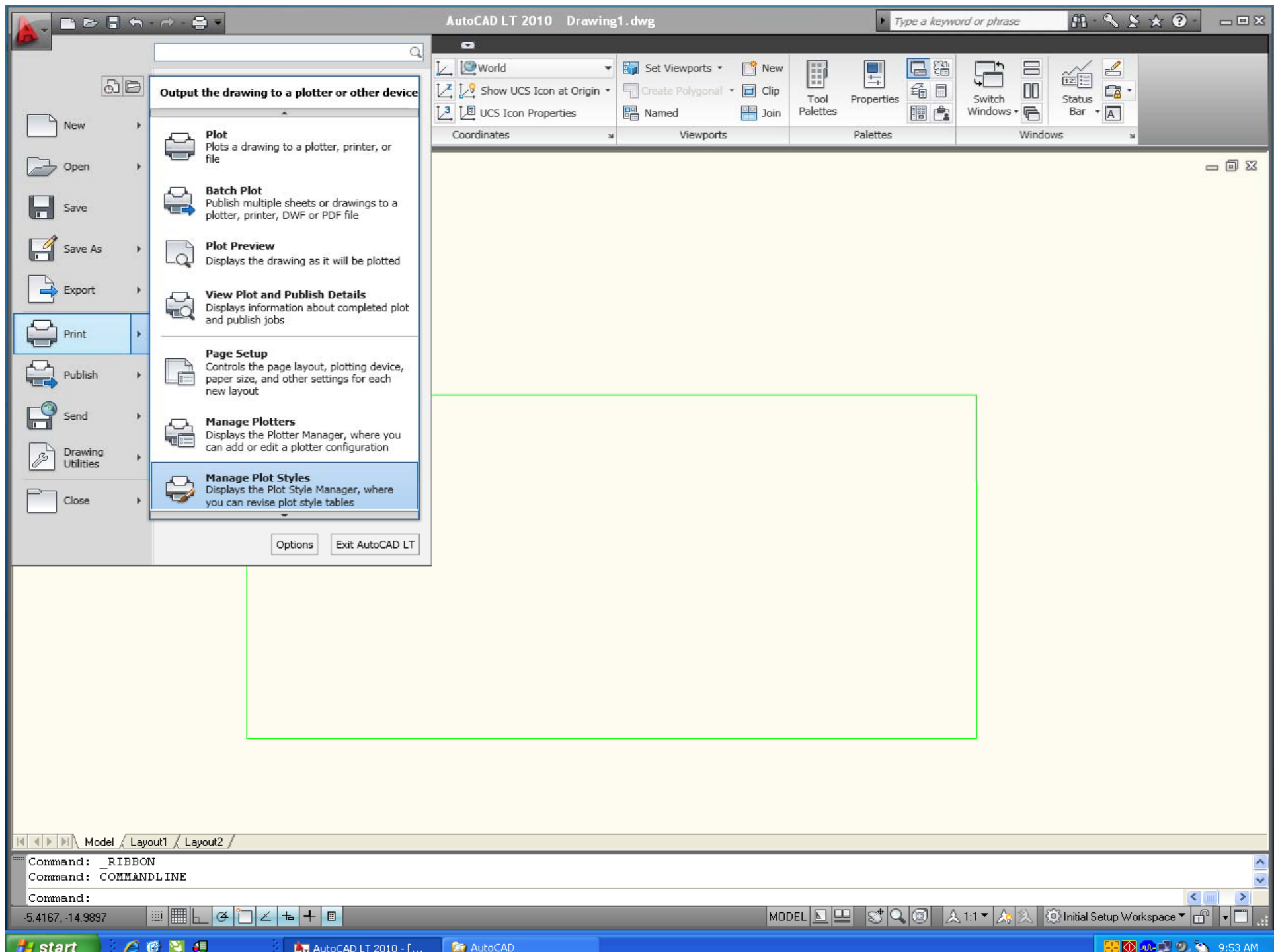


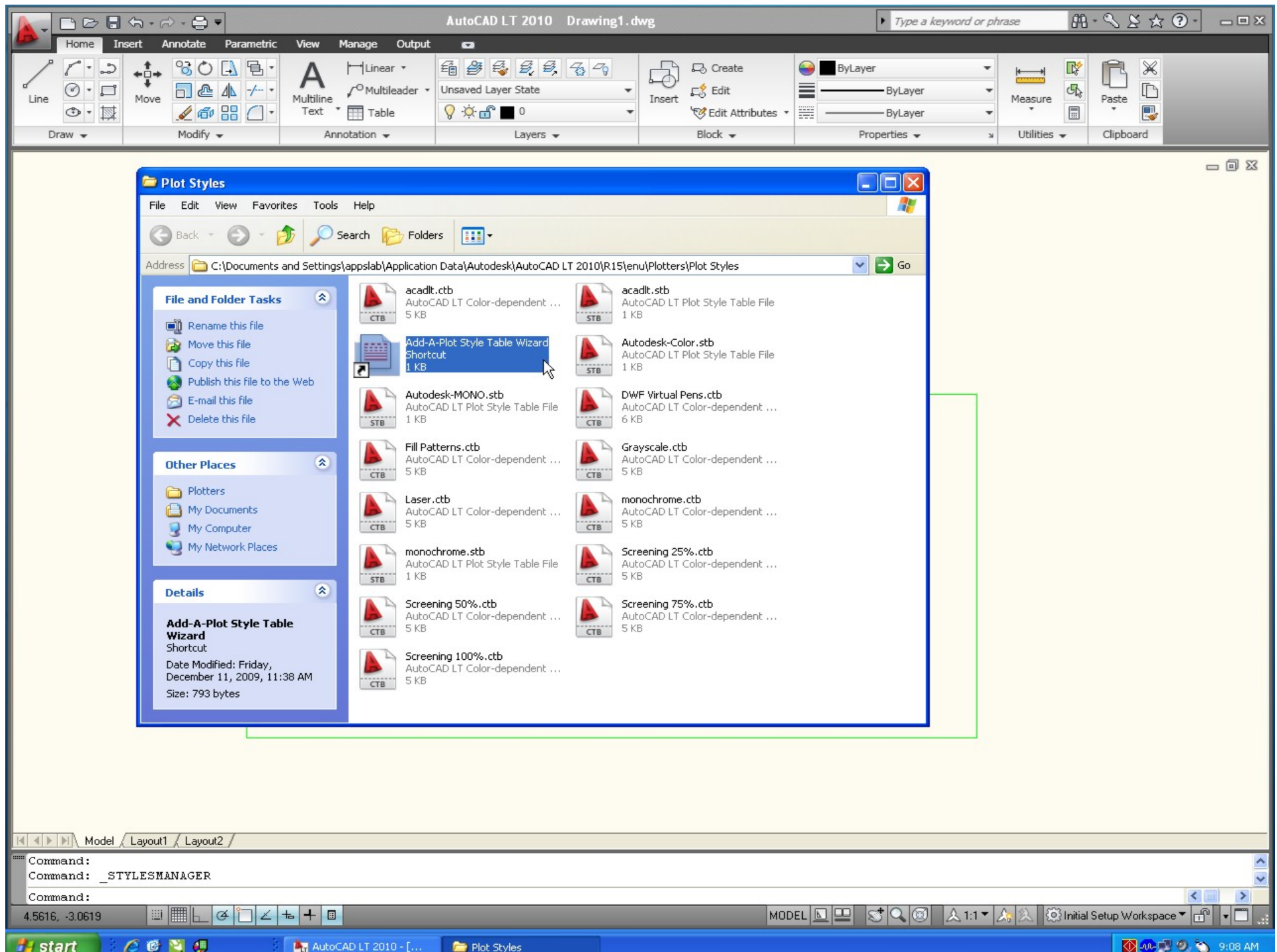


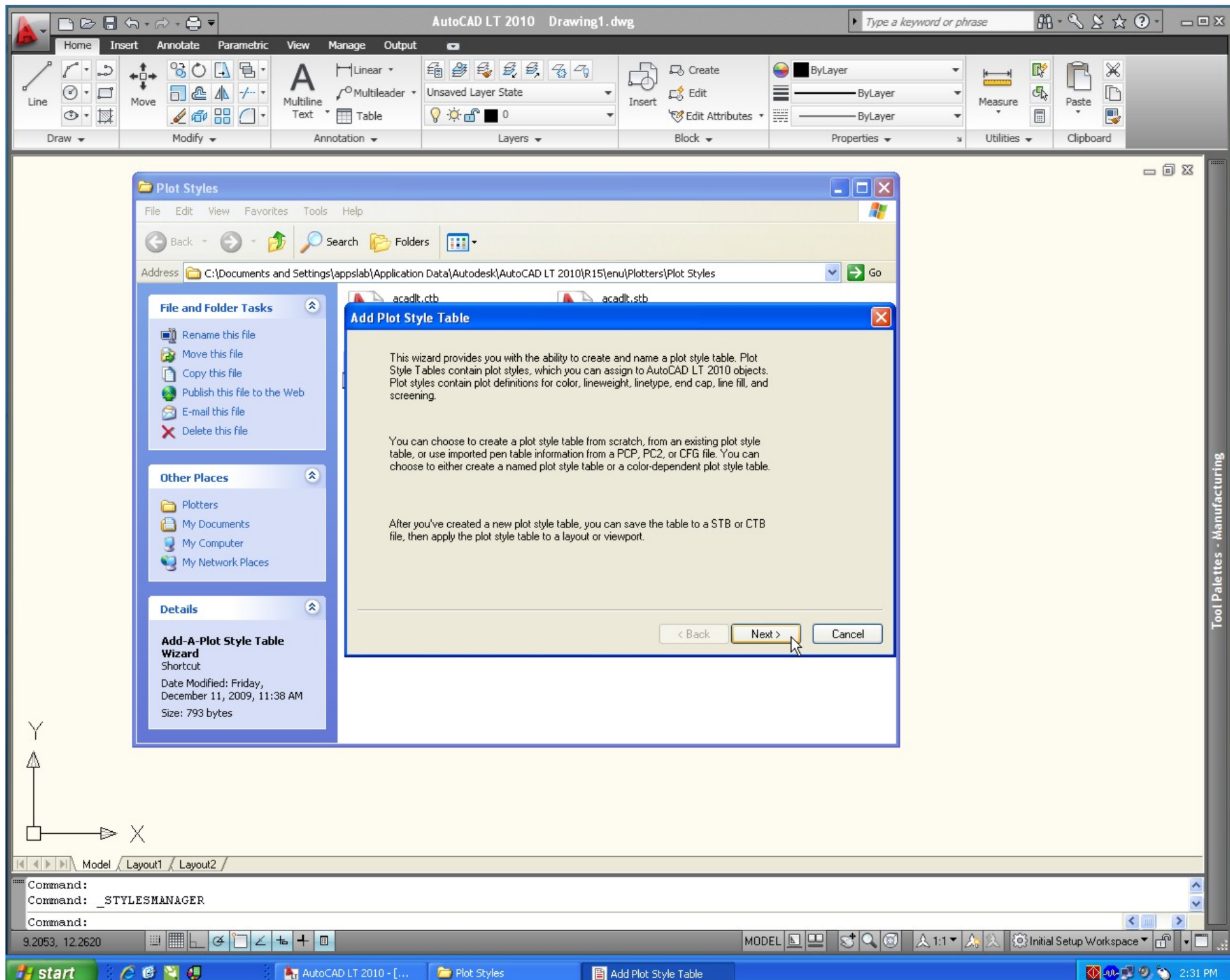


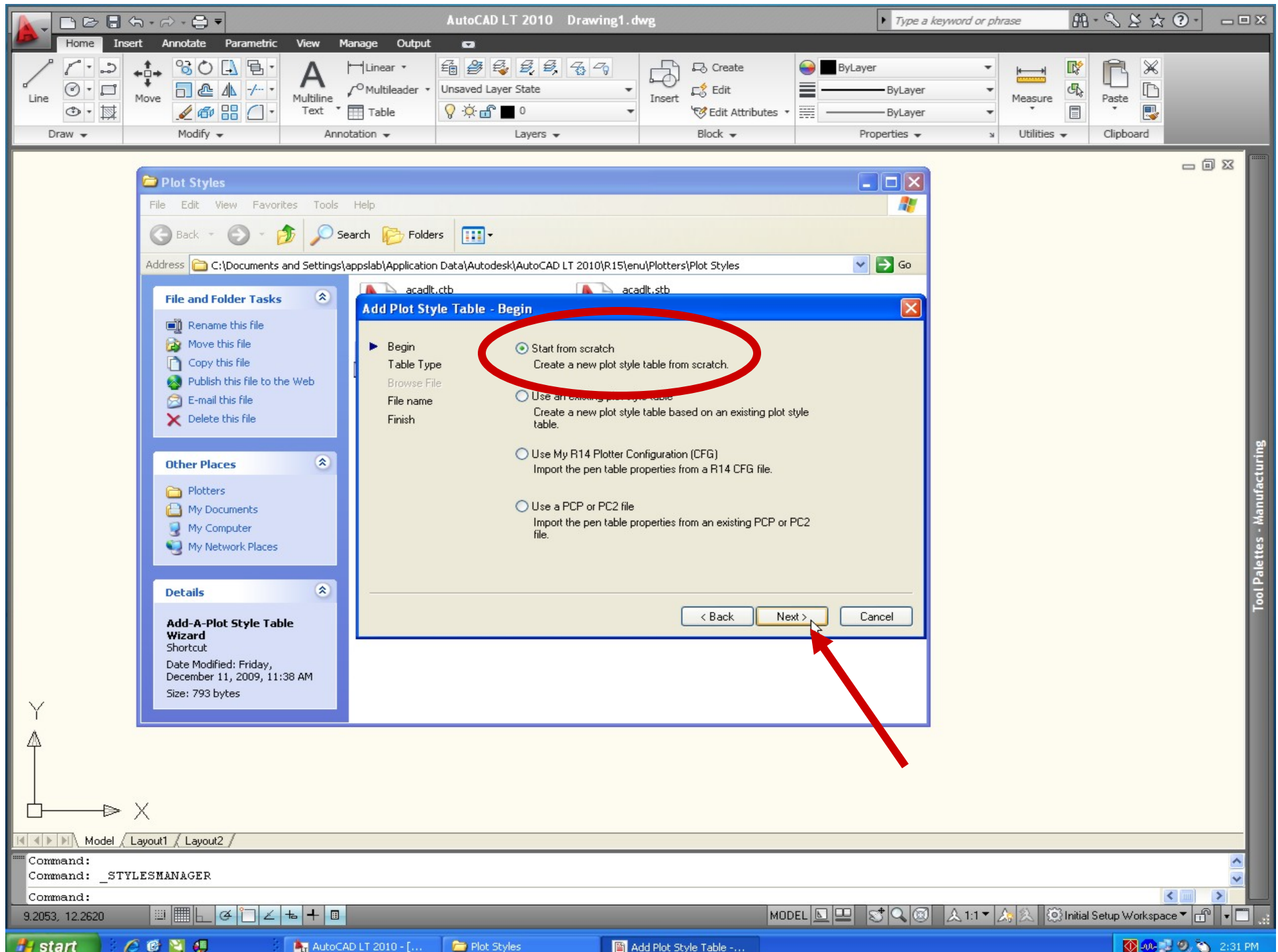
Create a 'Plot Style Table'
to create default
line weights.

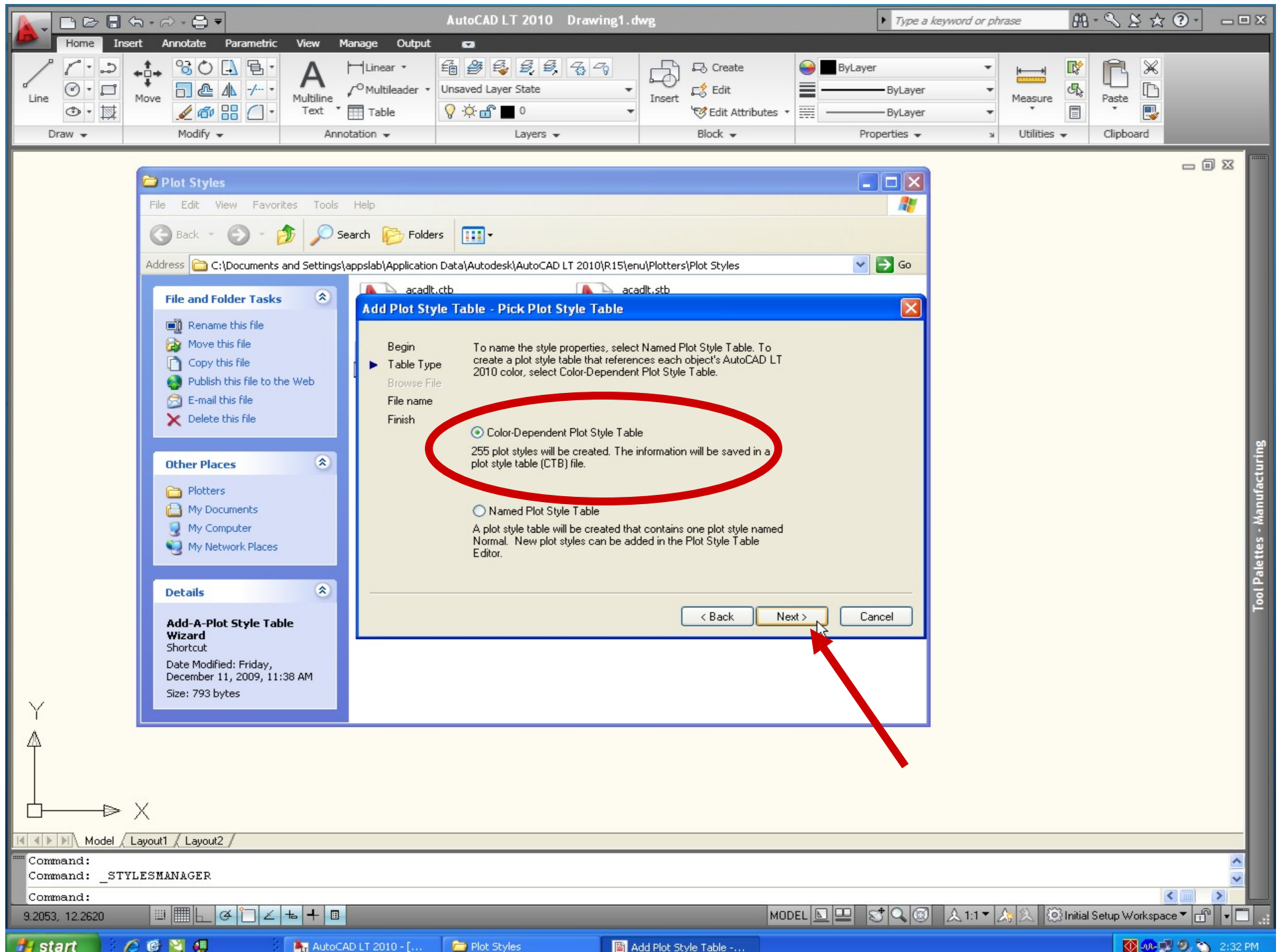
Earlier versions of AutoCAD will be
slightly different but you still need to set a
'Plot Style Table'.



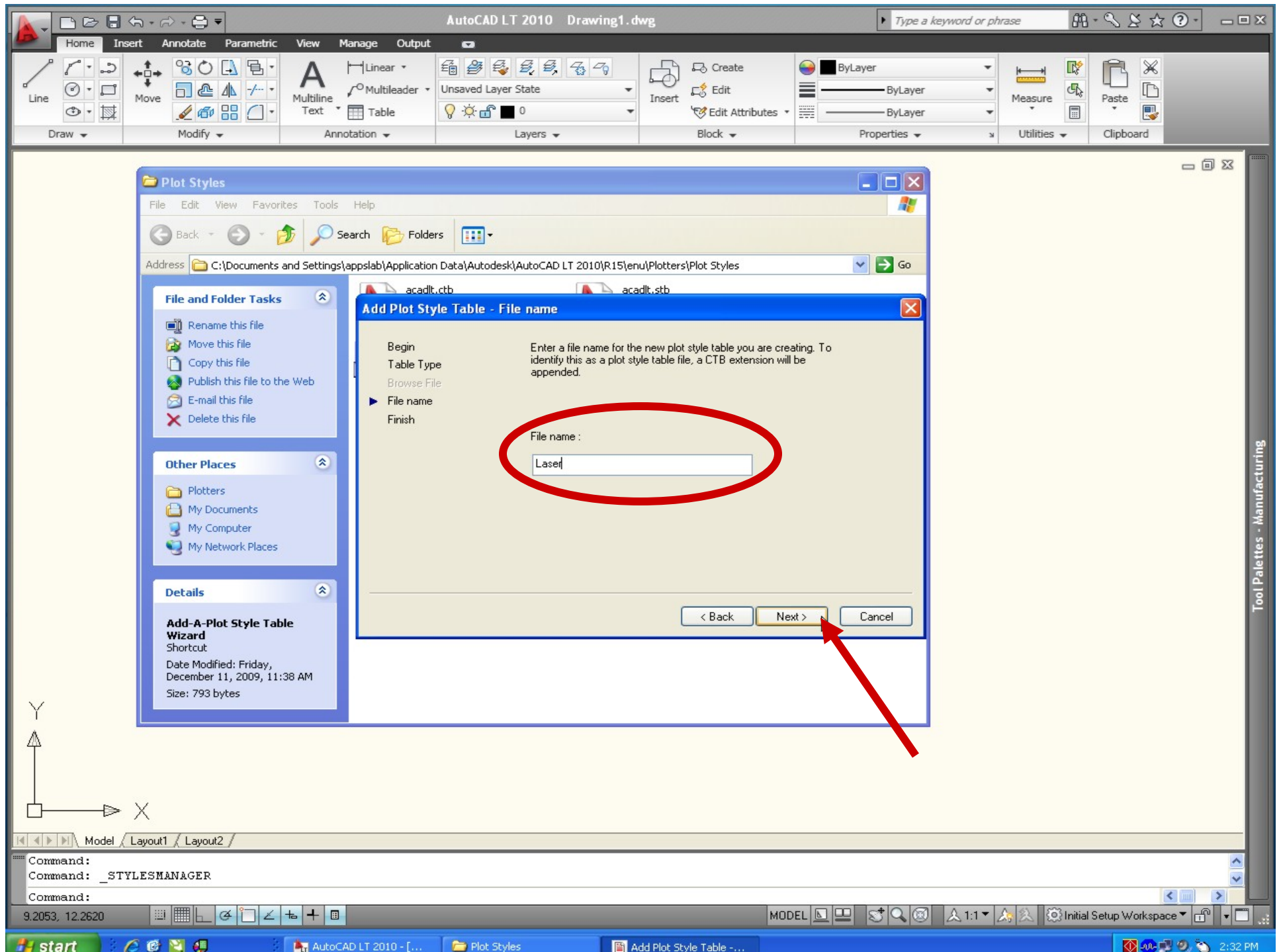




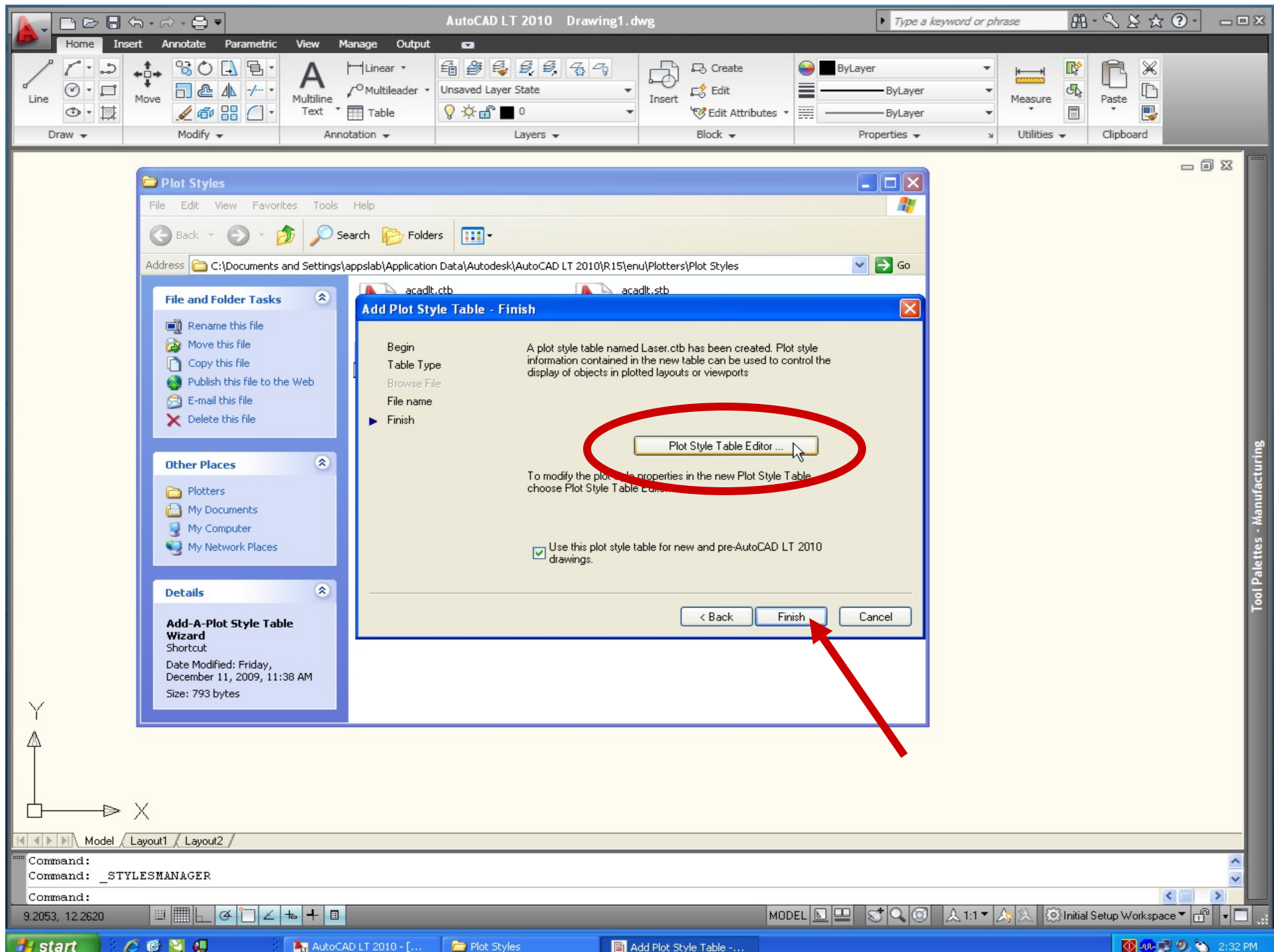




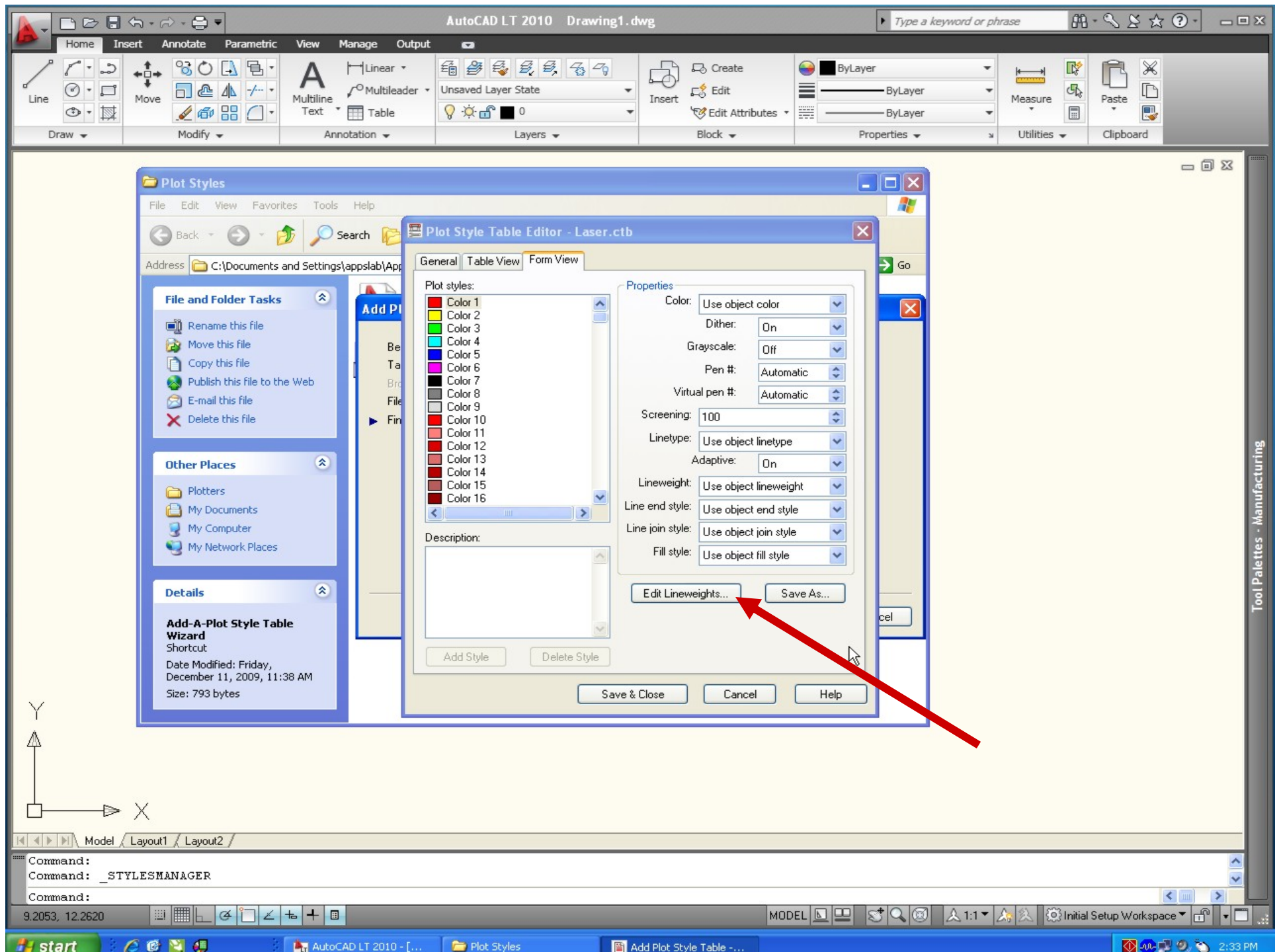
Name the Plot Style Table File as
'Laser'

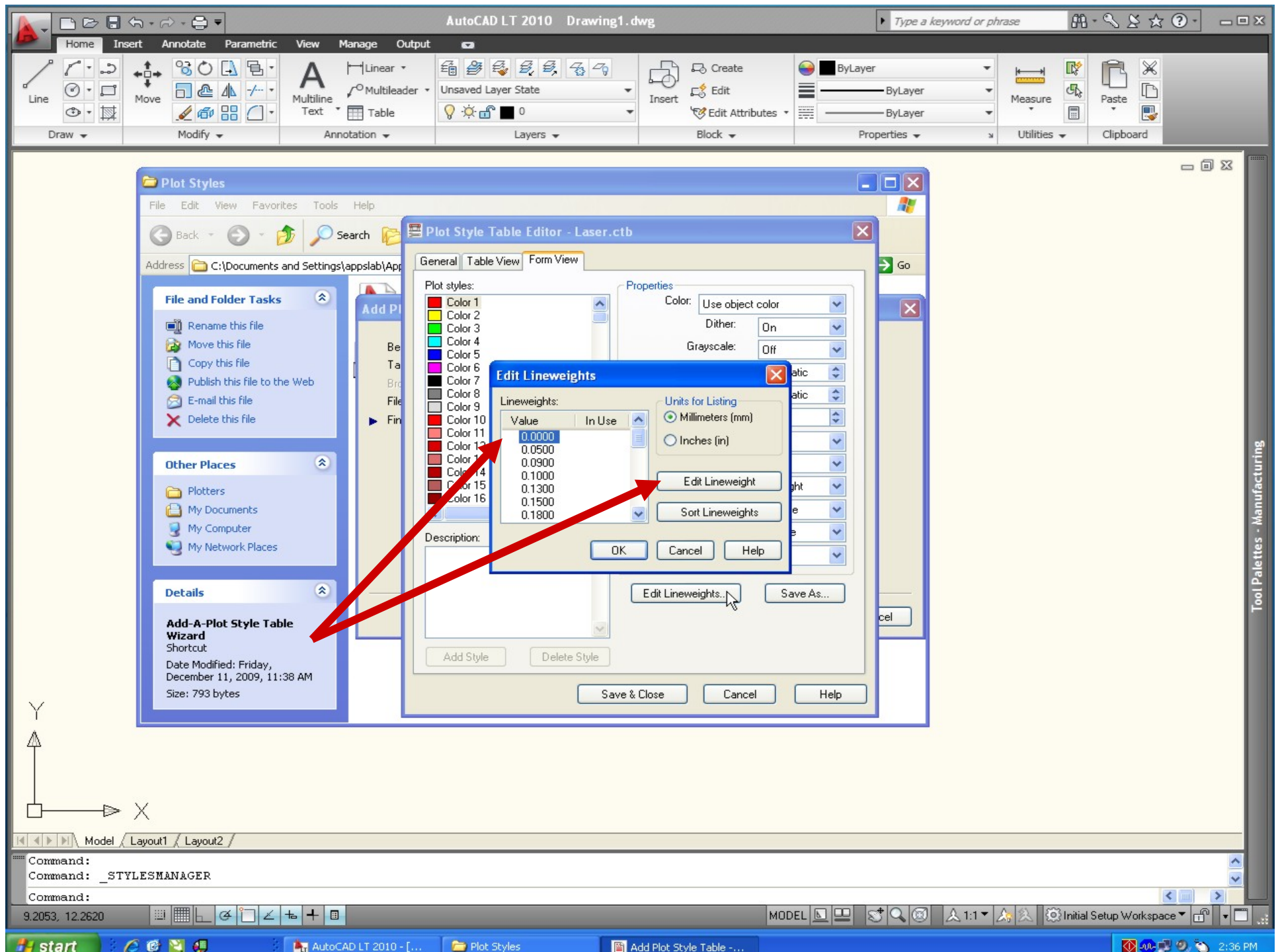


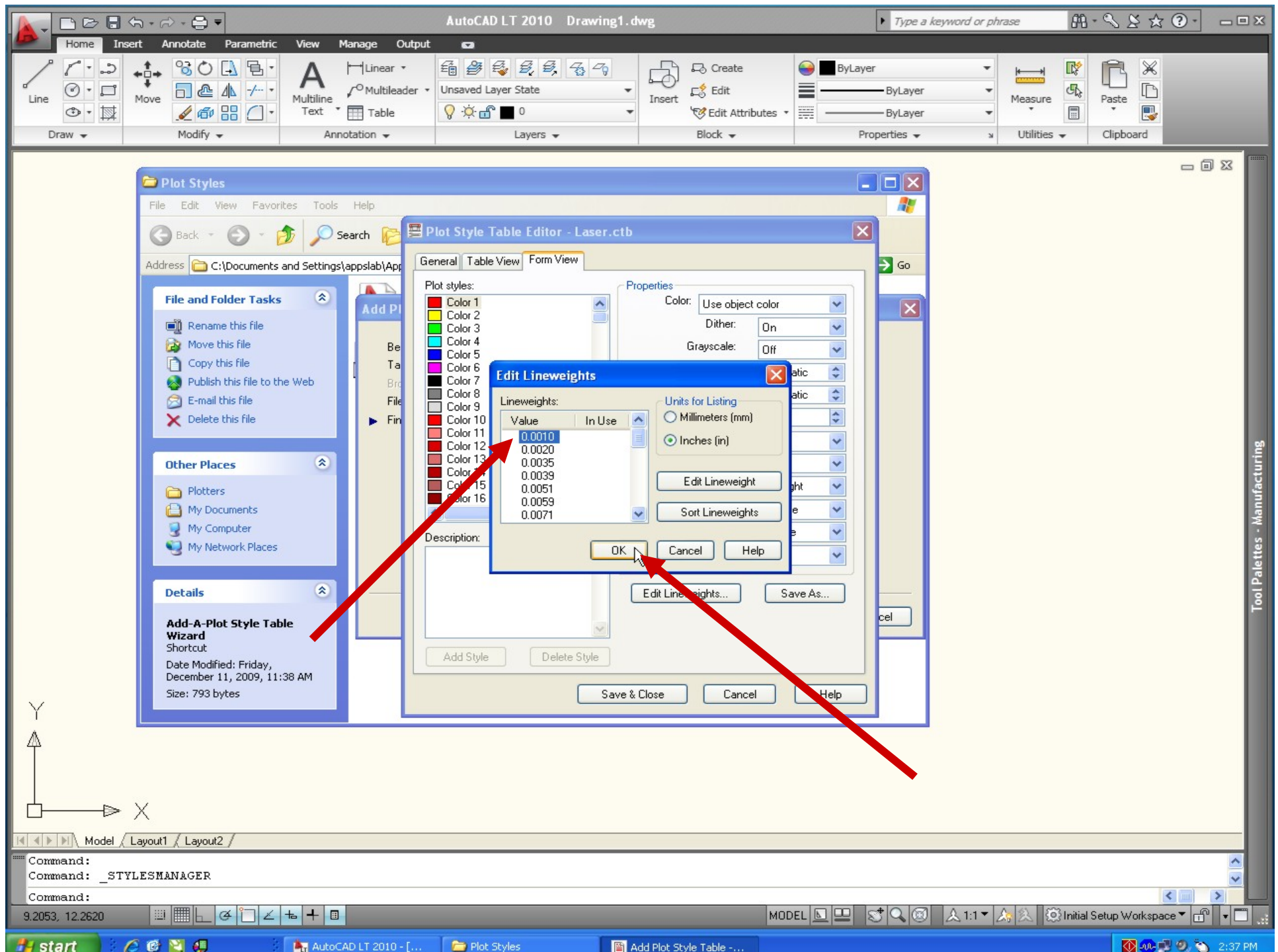
Edit the Plot Style Table File



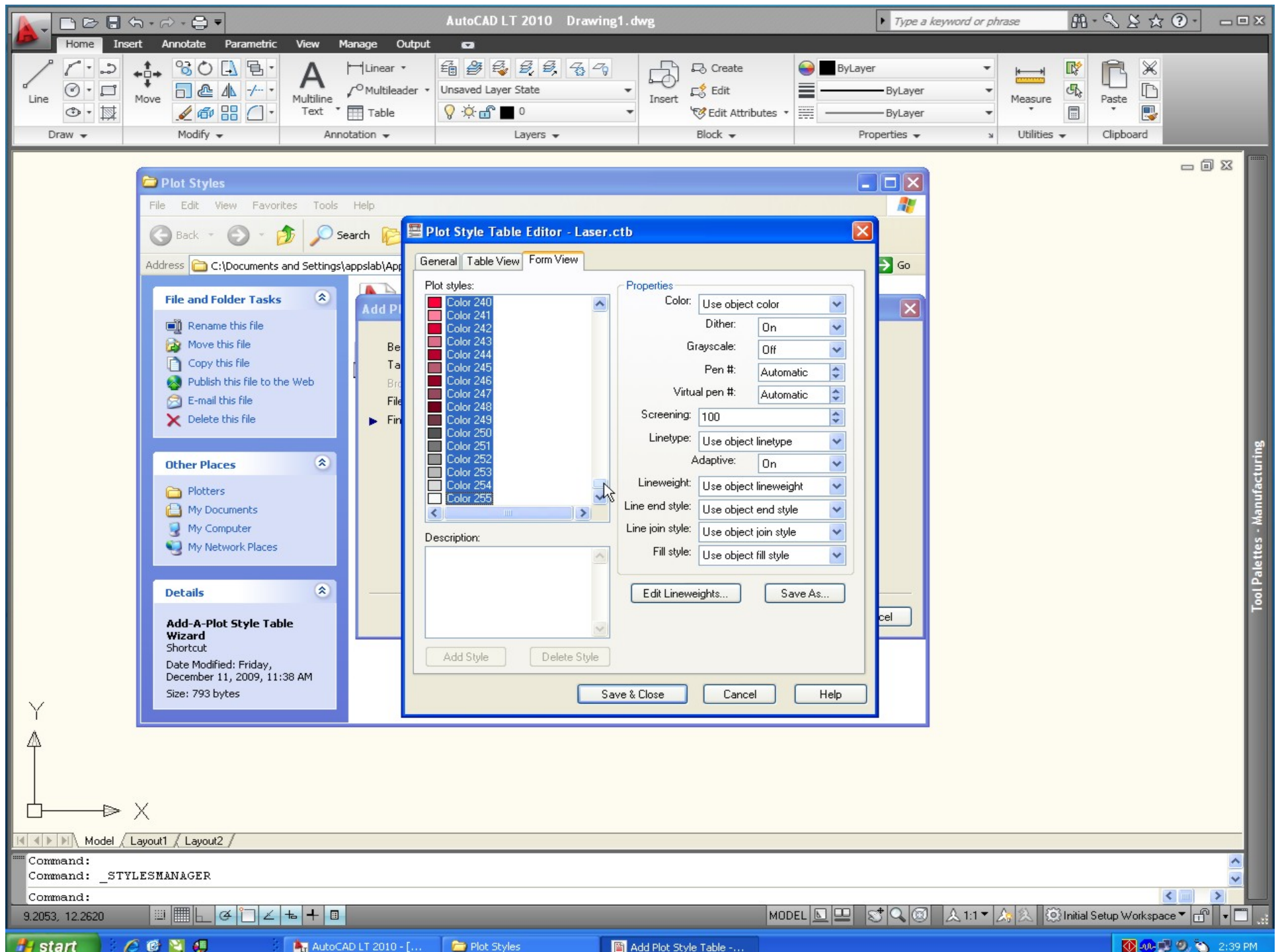
Edit the Plot Style Table for Lineweights to 0.001"

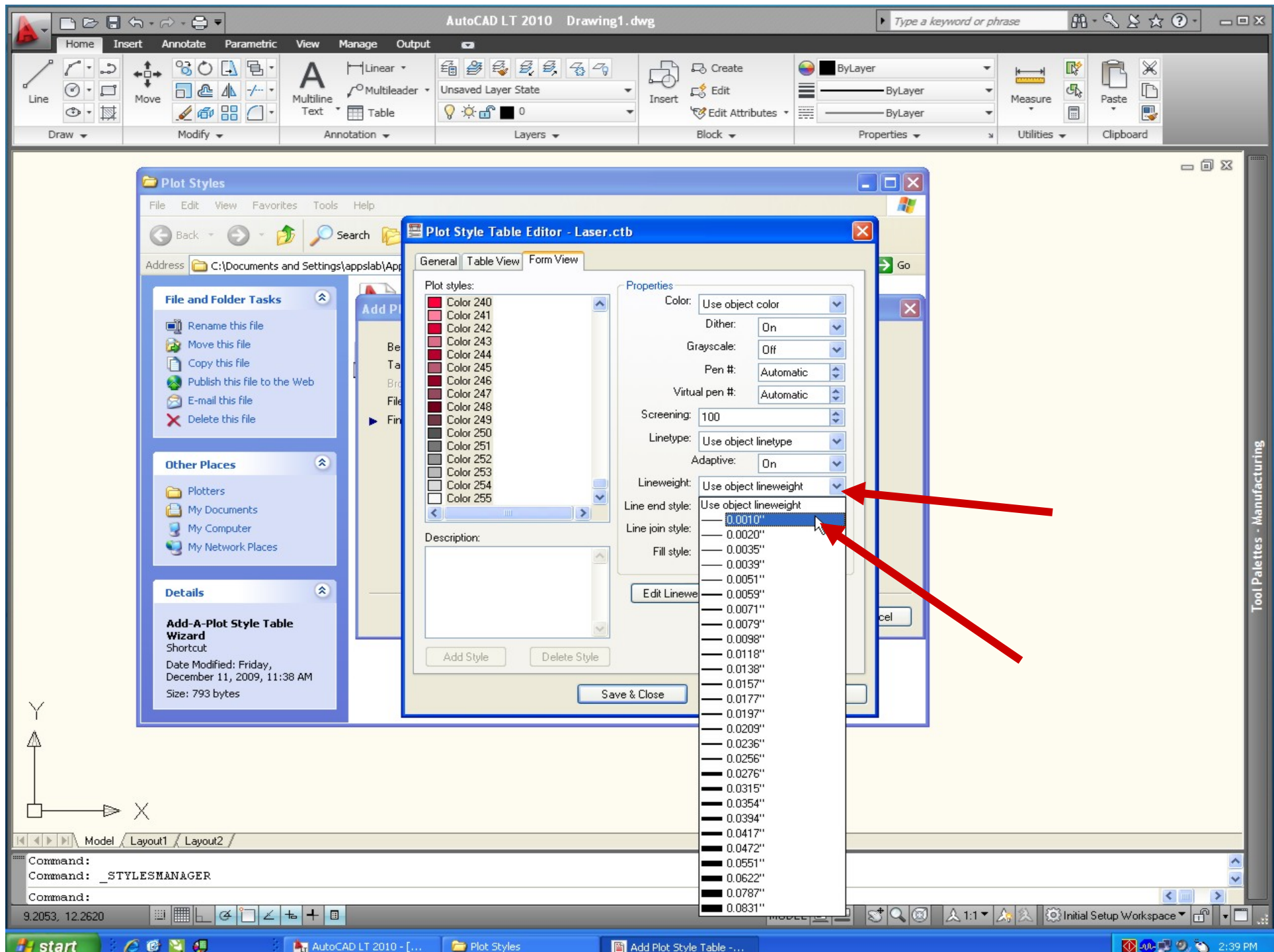




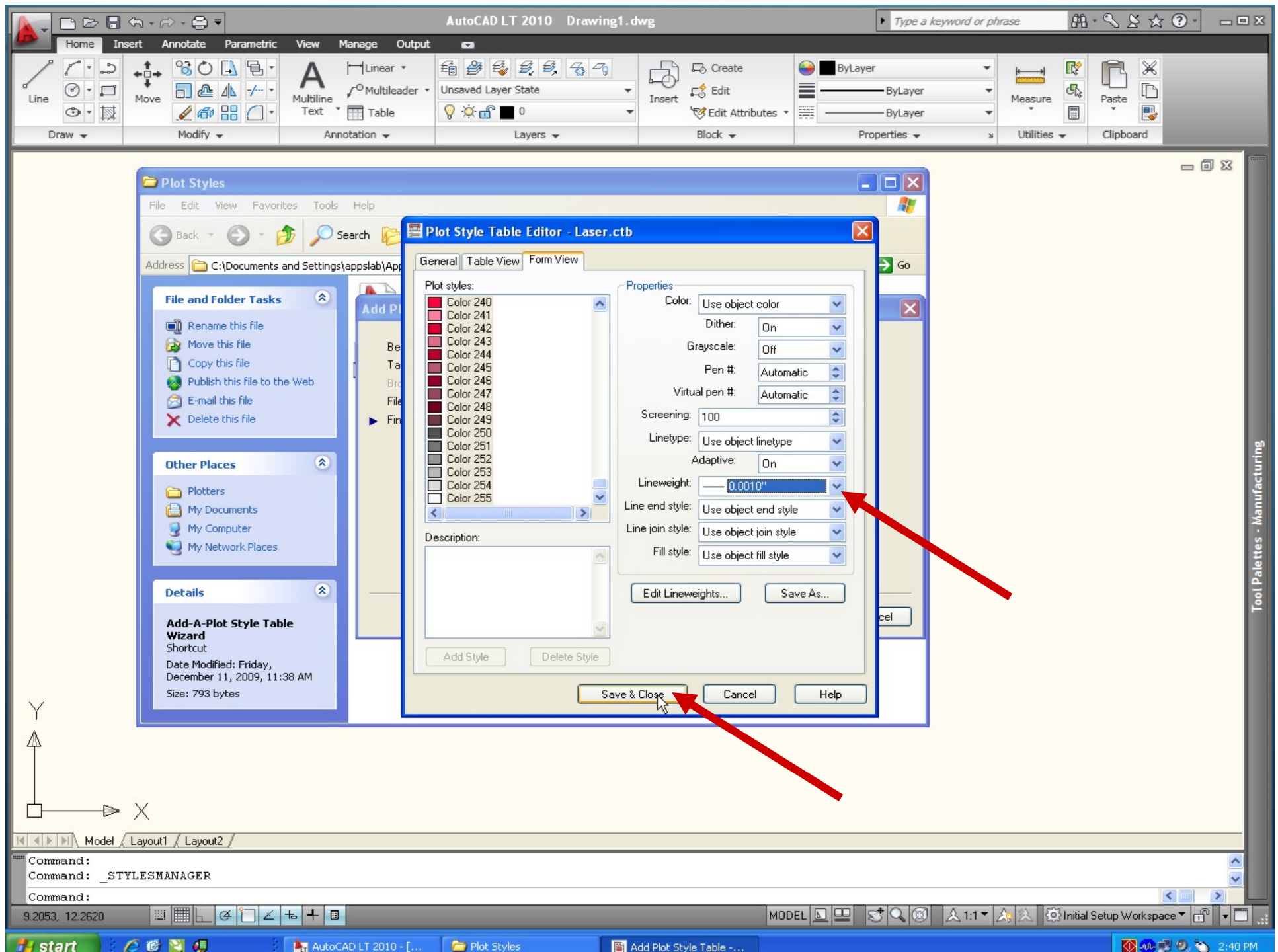


Select all colors and then apply
0.001" lineweight

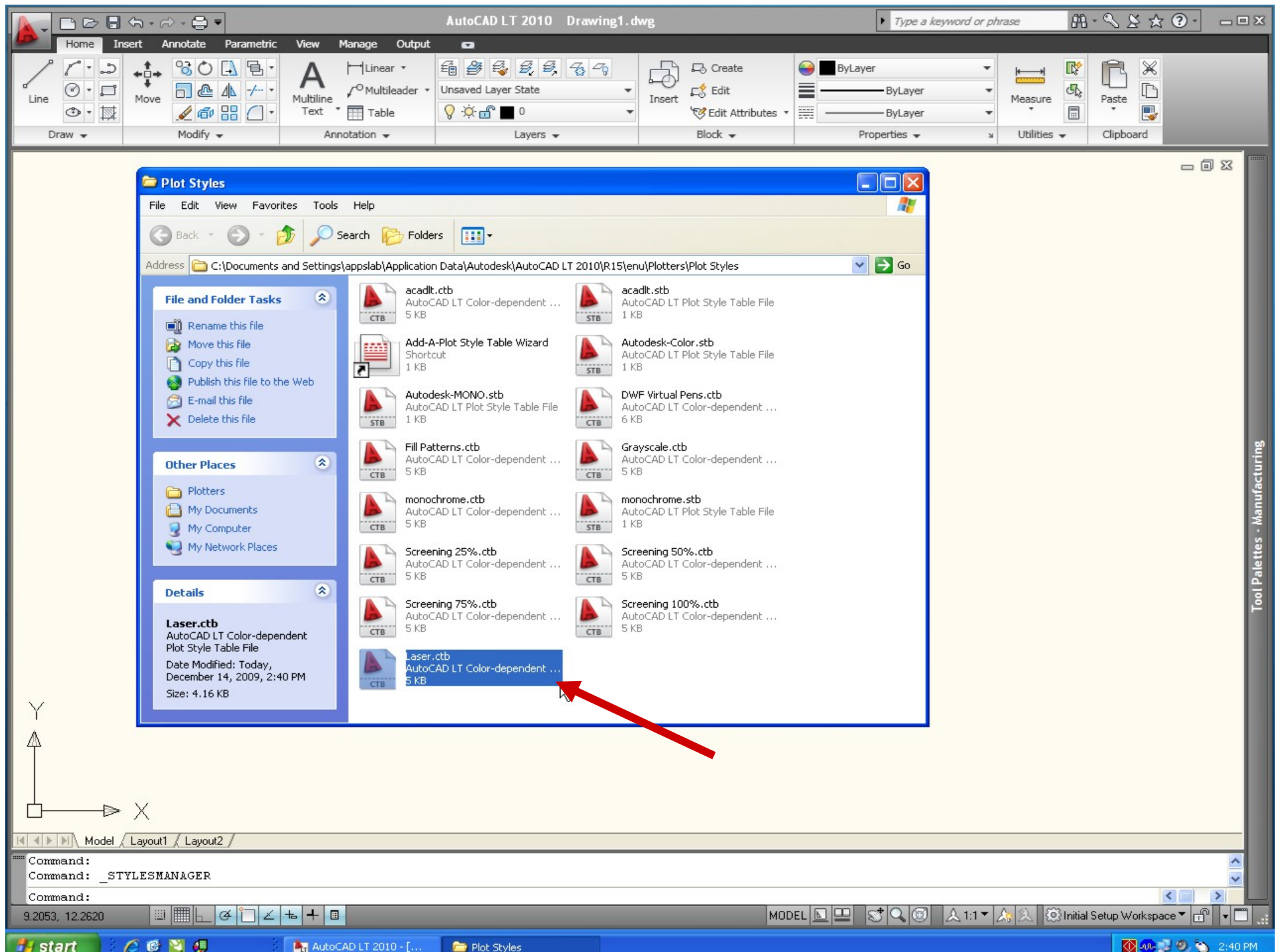




Save & Close



Plot Style Table now appears as
'Laser.ctb' for use by AutoCAD



AutoCAD Set-up Complete