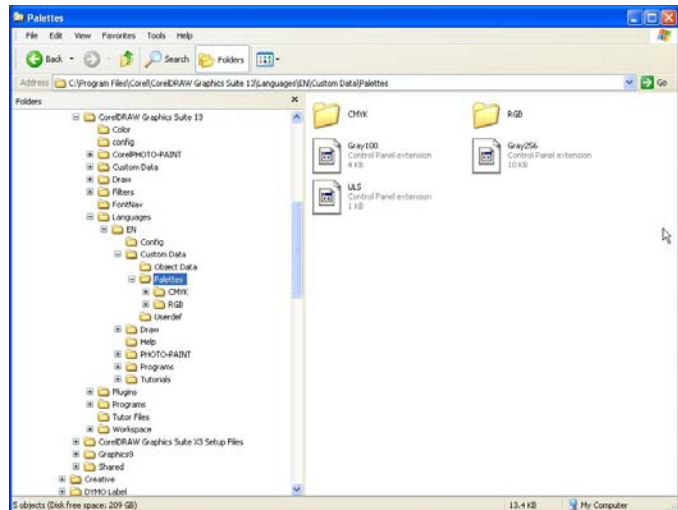


## CorelDRAW 13 Setup - Windows 2000 or Windows XP

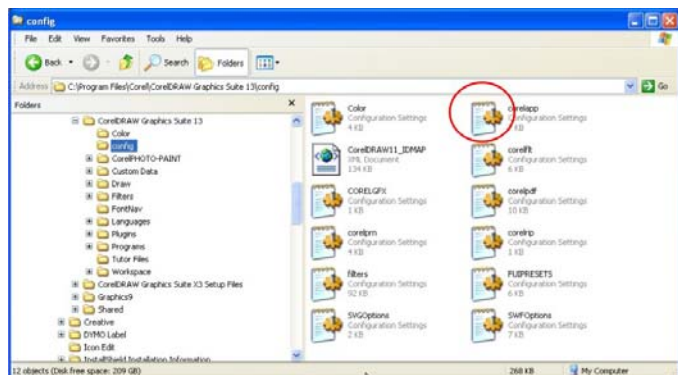
1. Make sure that you have installed all Service Releases and software patches from Microsoft. For Windows 2000, install Service Pack 3. If you are reading this document from the ULS Windows Printer Driver CD, as a service to you, you can find the file on this CD. There is an update available for Windows XP included in the ULS Windows Printer Driver CD, but it is not mandatory that you install it. For the latest releases, check Microsoft's website, [www.microsoft.com](http://www.microsoft.com). Please contact Microsoft if you have any questions regarding these upgrades. ULS is not responsible for any problems as a result from the usage of these patches.
2. If you have not already done so, install CorelDraw on your computer, but do not open it yet.
3. It is important that your version of CorelDraw is updated with the latest patches and service releases. For the latest patches and updates go to the Downloads section of CorelDraw's website, [www.corel.com](http://www.corel.com). Be sure to check for any updates from time to time to keep your version up to speed. Please contact CorelDraw if you have any questions regarding these upgrades. ULS is not responsible for any problems as a result from the usage of these patches.

The ULS Windows Printer Driver must be loaded before continuing. Your laser system should be connected to LPT1 and the ULS Windows Printer Driver should be set as the default driver.

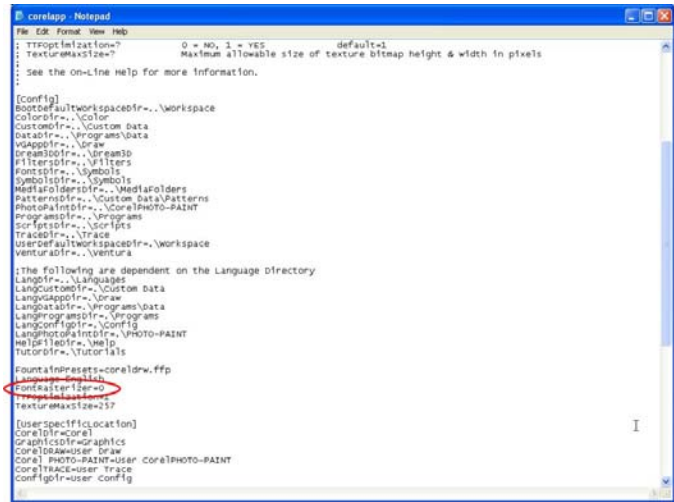
Refer to the Computerized Controls manual that came with your laser system on how to install and use the ULS Windows Printer Driver. After the driver is installed, do not remove the driver disk from your computer at this time. Using Windows Explorer, locate the file named "ULS.CPL", on the ULS Windows Printer Driver CD, and copy this file over to the C:\Program Files\Corel\CorelDRAW Graphics Suite 13\Languages\EN\Custom Data\Palettes folder.



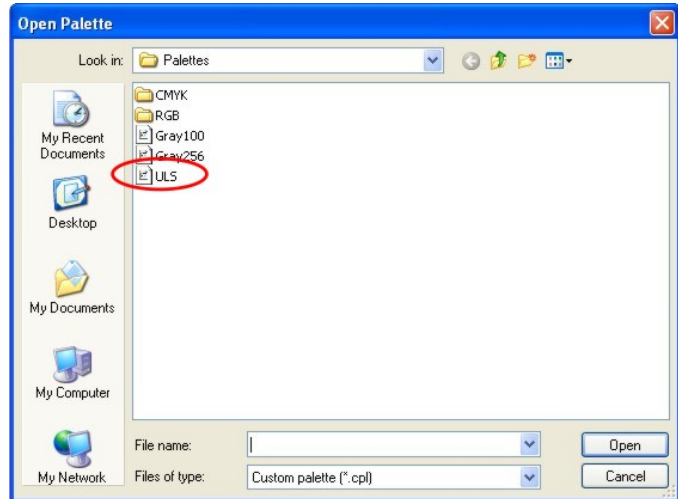
4. While still in Explorer, locate a file named "corelapp.ini" located in the C:\Program Files\Corel\CorelDRAW Graphics Suite 13\Config folder. Double-clicking on the file it will open it in Notepad.



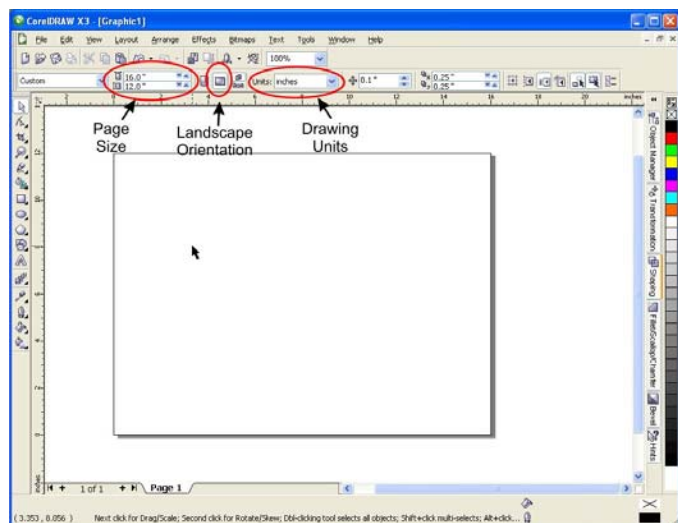
Scroll down past the semi-colons to the [Config] header. Then scroll down about 30 lines to the line that reads "FontRasterizer=1". Change the 1 to a 0 (zero). Save this file and then close Notepad.



- Open CorelDraw and start a new graphic.
- In the main menu at the top of the screen, click on "Window", then "Color Palettes", and then click on "None". Your default palette will disappear. Once again click on "Window", then "Color Palettes", and then click on "Open Palette". After the "Open Palette" pop-up box appears, double-click on "ULS.CPL". The ULS color palette will now appear on the right side of the screen.

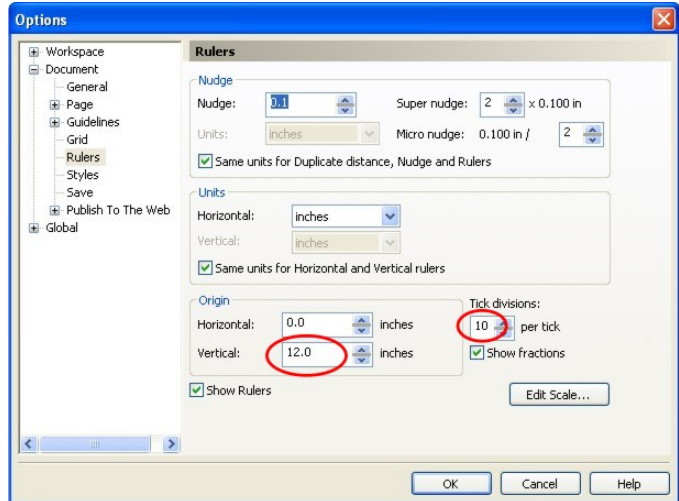


- On the Standard Property bar, click on the landscape orientation (the sideways rectangle). If you would like the drawing units in metric, choose millimeters from the drop down list. Now, type in the page width and height that matches your laser platform.

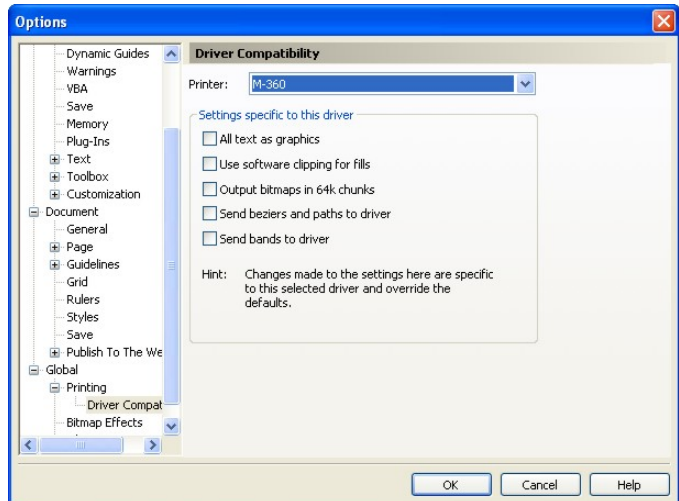


8. We now need to adjust the vertical ruler, on the left side of the screen, to match the rulers in the laser system. To do this, we need to adjust the ruler's vertical origin.

Double-click directly on the vertical (side) ruler. The "Options" dialog will appear. In the vertical origin box, type in the same height value as you did when you set up the page height in the previous step. For example, 12 inches for an M-300 machine. If you would like the scale to be displayed in tenths, choose "10 per Tick" in the "Tick Division" drop-down list box.



9. While still in the "Options" dialog box, double-click on "Global" to expand the list. Then double-click on "Printing" to expand the list. Under Printing, click on Driver Compatibility. Make sure that the laser system's name is displayed in the printer drop-down list, as shown in the example.

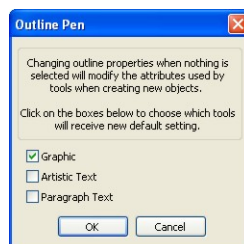


10. In the settings specific for this driver dialog box, make sure that ALL the check boxes are UNCHECKED. Now click on "OK" to close the "Options" dialog box.

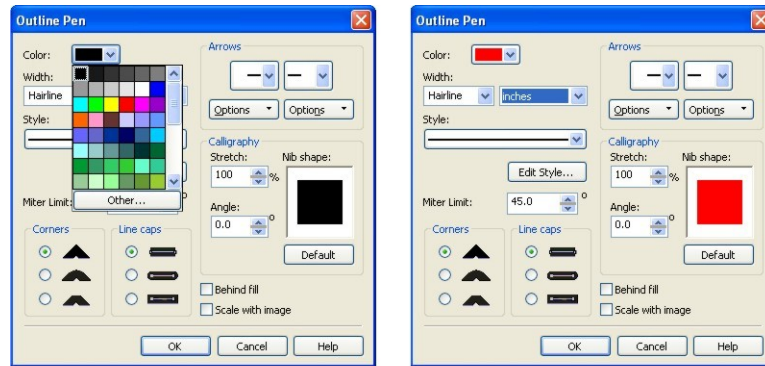
11. The next step is to set the default value to 'Hairline' for the line width and color when drawing graphic objects. To do this, click on the Outline Tool (on the toolbox on the left side of your CorelDRAW screen), then the Outline Pen dialog in the fly out.



12. The Outline Pen dialog will appear. With "Graphic" being the only one selected, click "OK".



13. Click the down arrow in the Color dropdown box to expand the list and click on the color red.

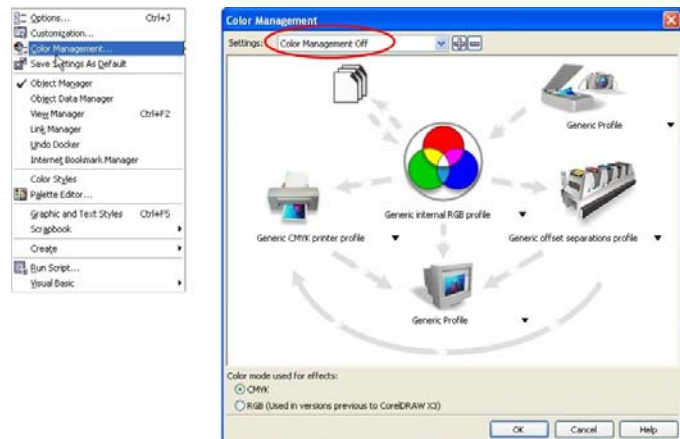


**Dialog Selecting Color**

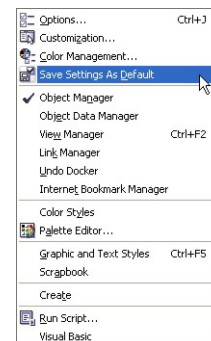
**Dialog Selecting Hairline & Inches**

14. Click the down arrow in the "Width" dropdown box to expand the list and click "Hairline". The units can be "Inches", "millimeters" or anything else you prefer. Click "OK" to close the Outline Pen dialog box.

15. In the top menu, click "Tools", then click "Color Management". Click on the down arrow to expand the "Style" dropdown list. Click "Color Management Off", and then click "OK".



16. Finally, from the Tools Menu, select "Save Settings As Default".



17. The setup defaults for CoreIDRAW 13 are now complete. Whenever you start a new document, all of the default settings that we had setup will automatically apply to the new document.