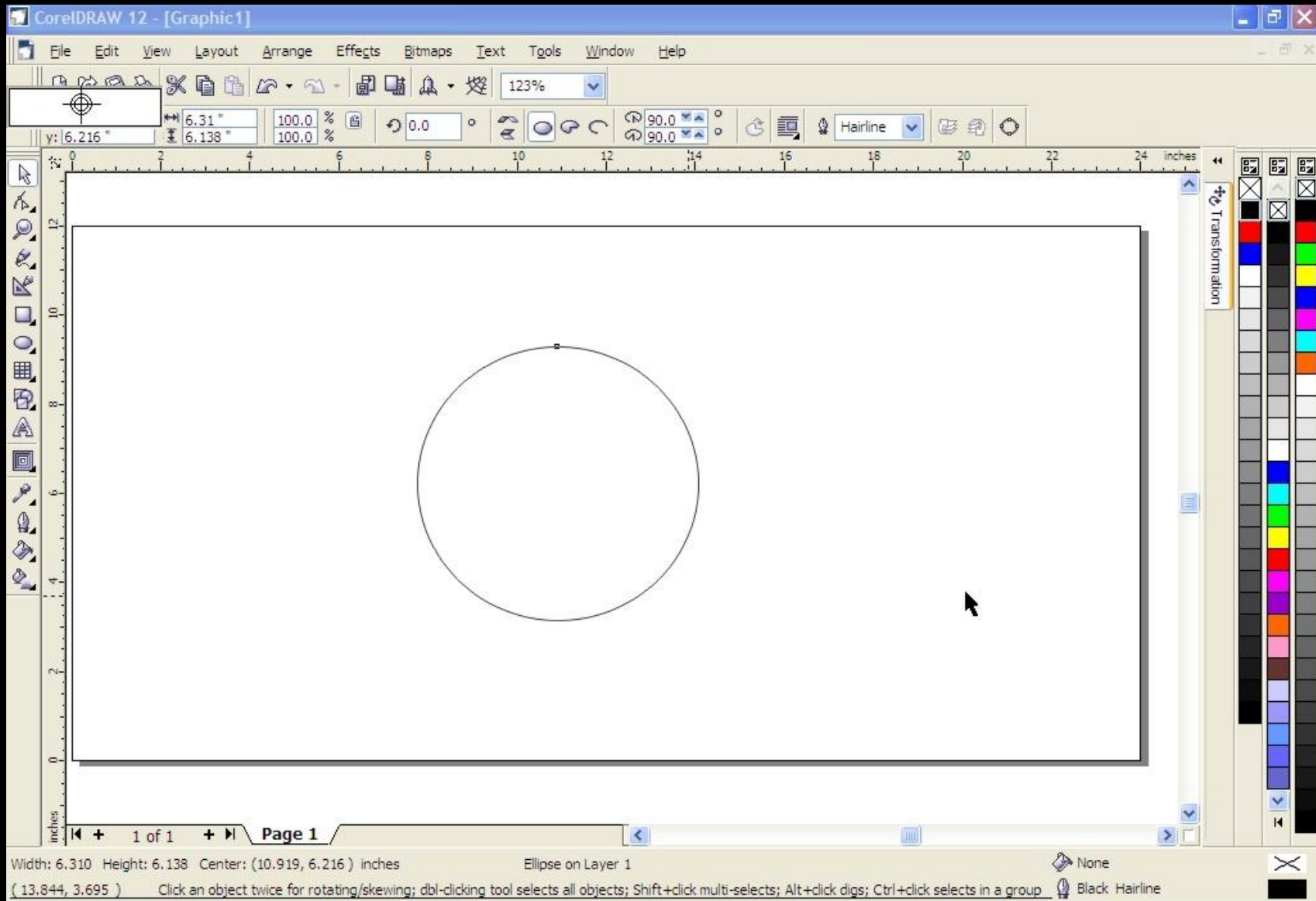
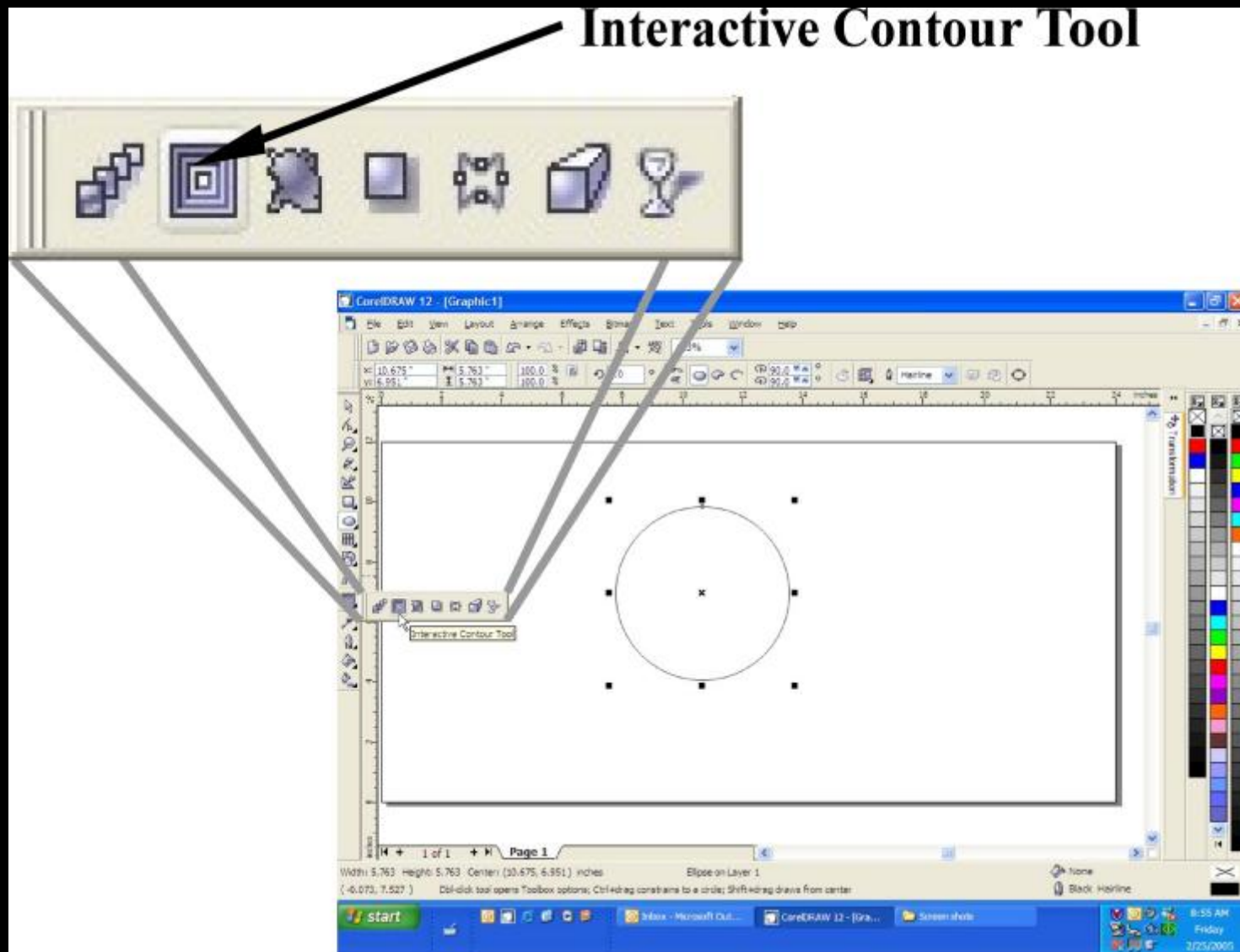


Creating 3D in CorelDraw

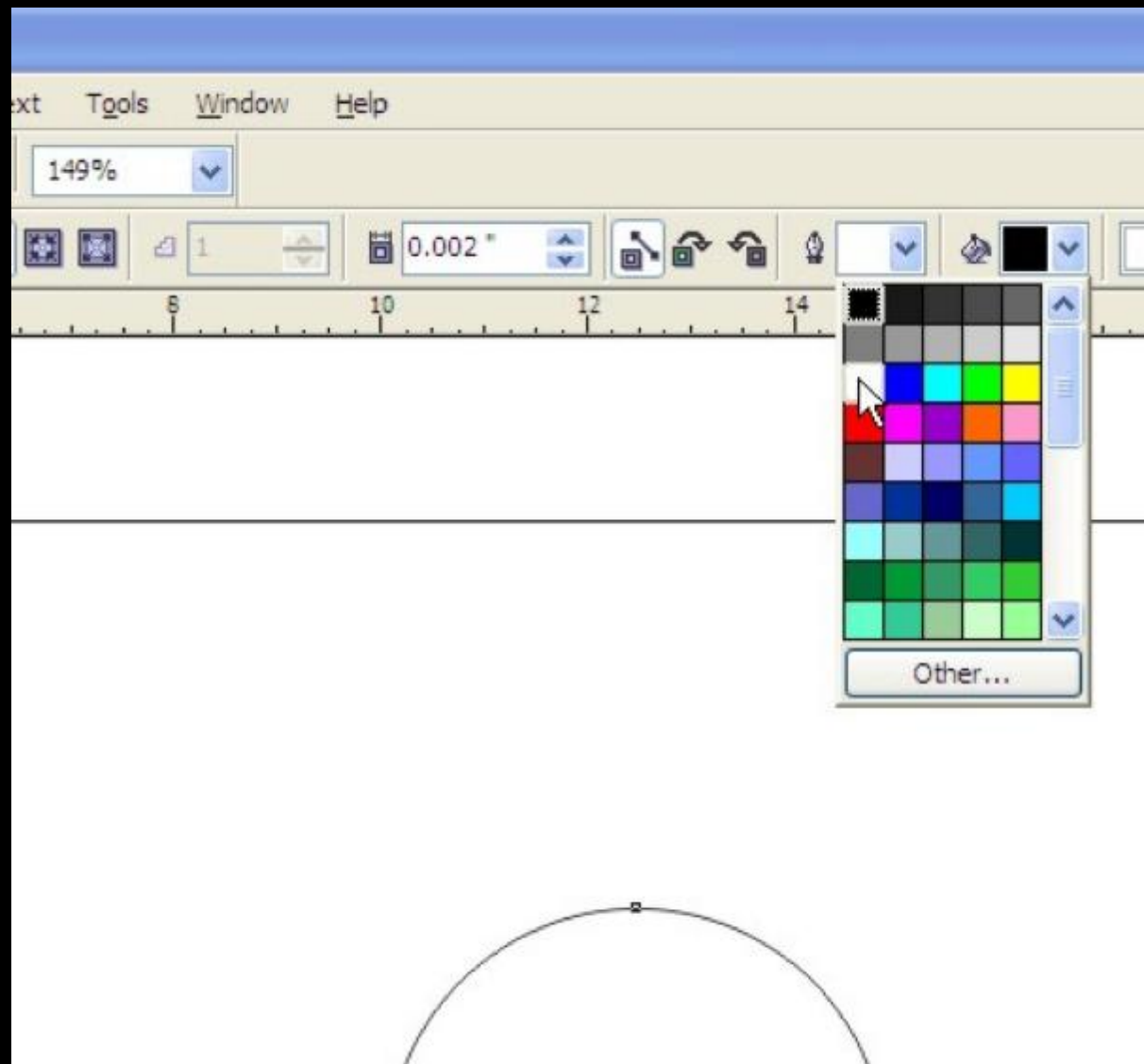
Draw or Select "Black" Outline



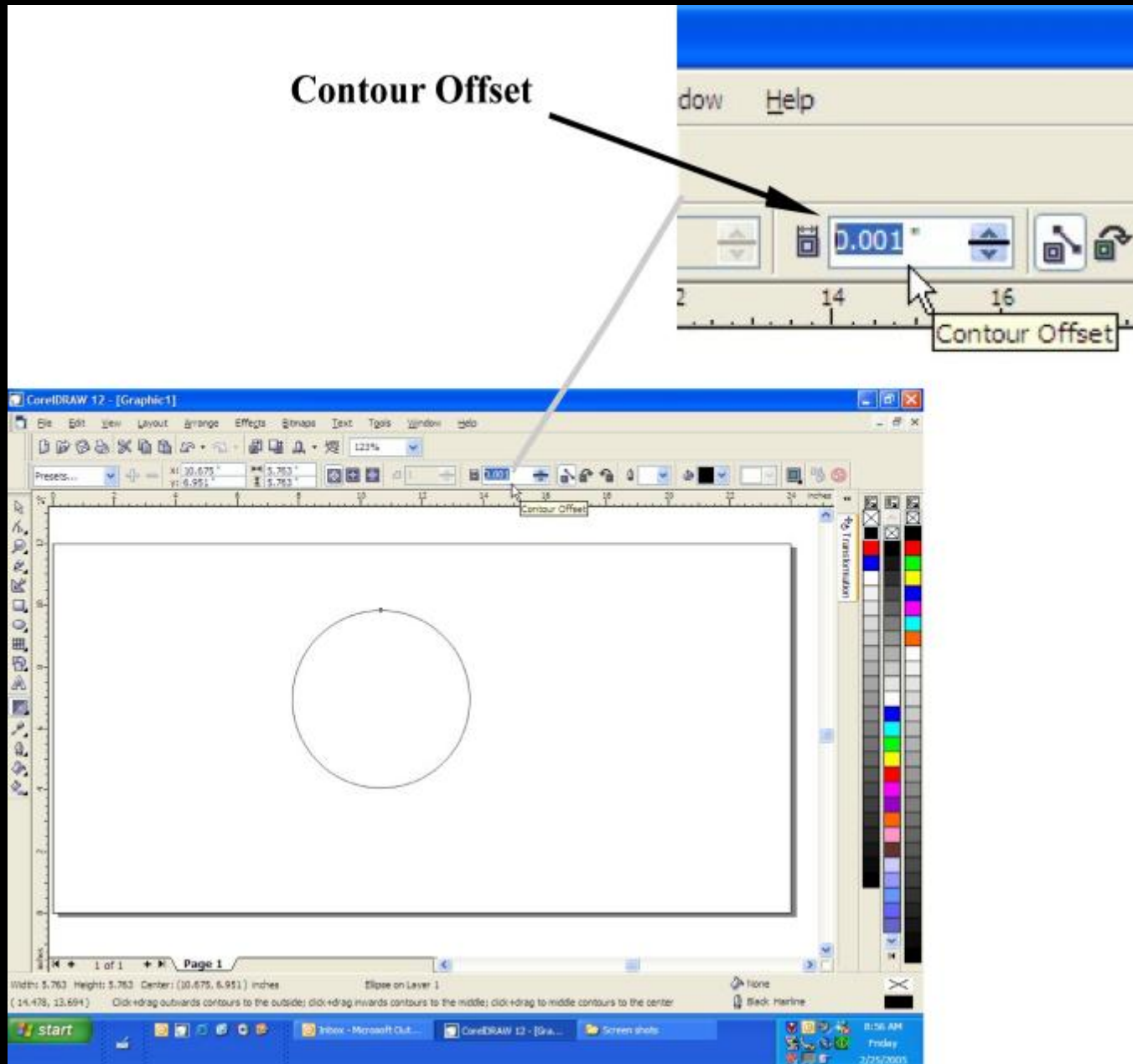
Select “Interactive Contour Tool” with object selected



Convert Outline Color to White on the Contour toolbar

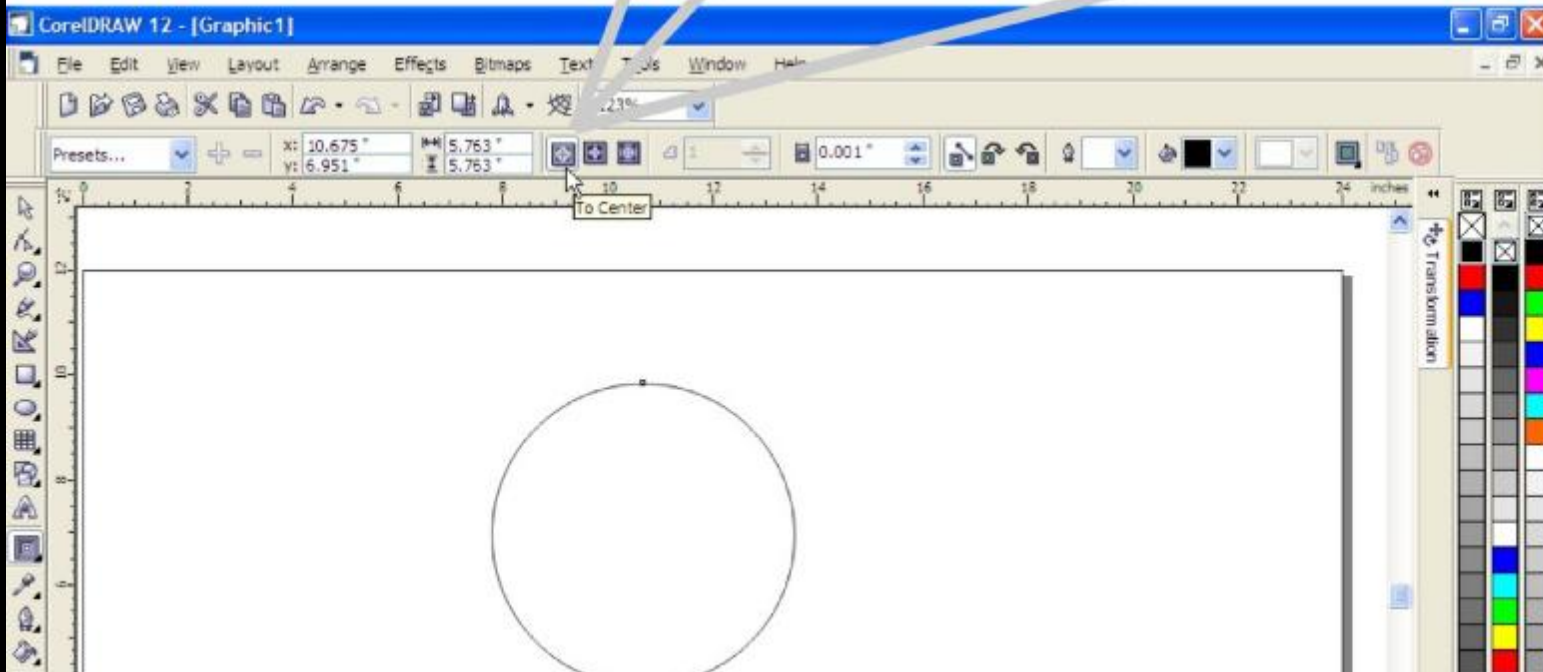
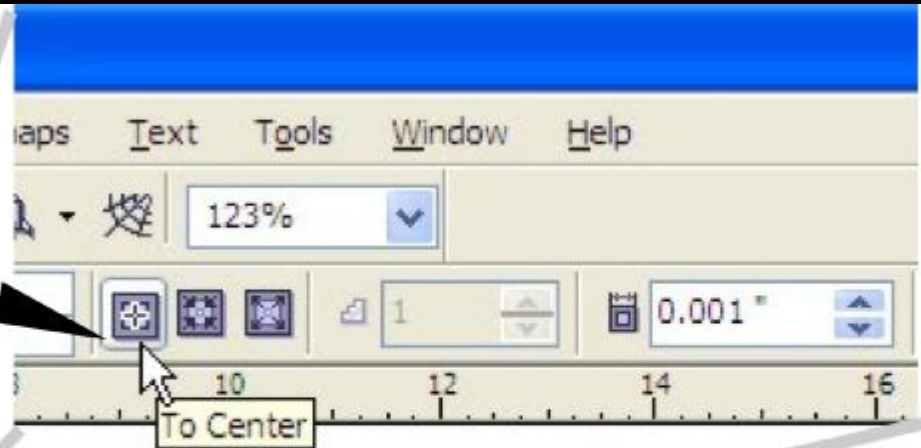


Adjust the Contour Offset to 0.001”

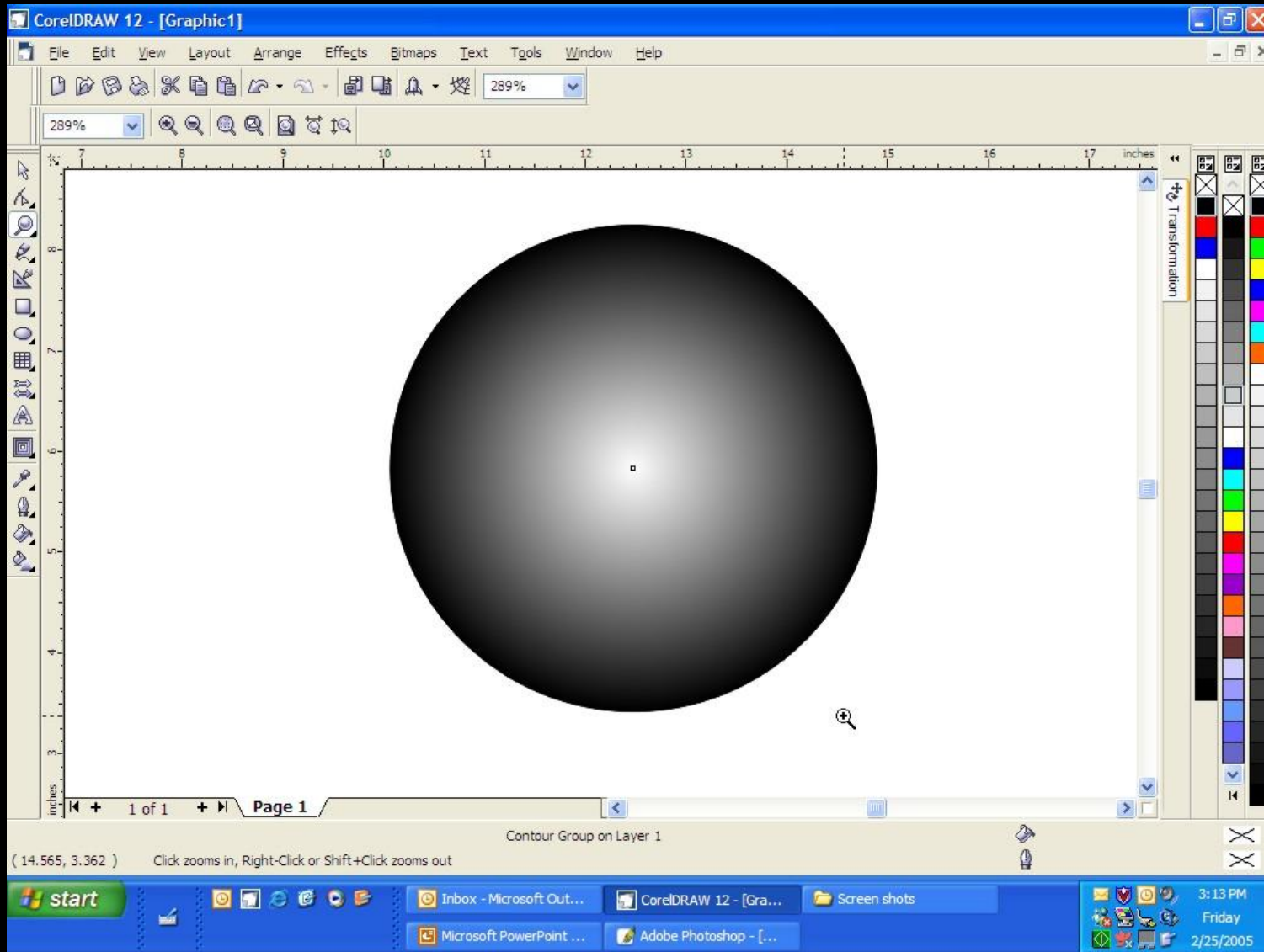


Select "To Center" to Contour

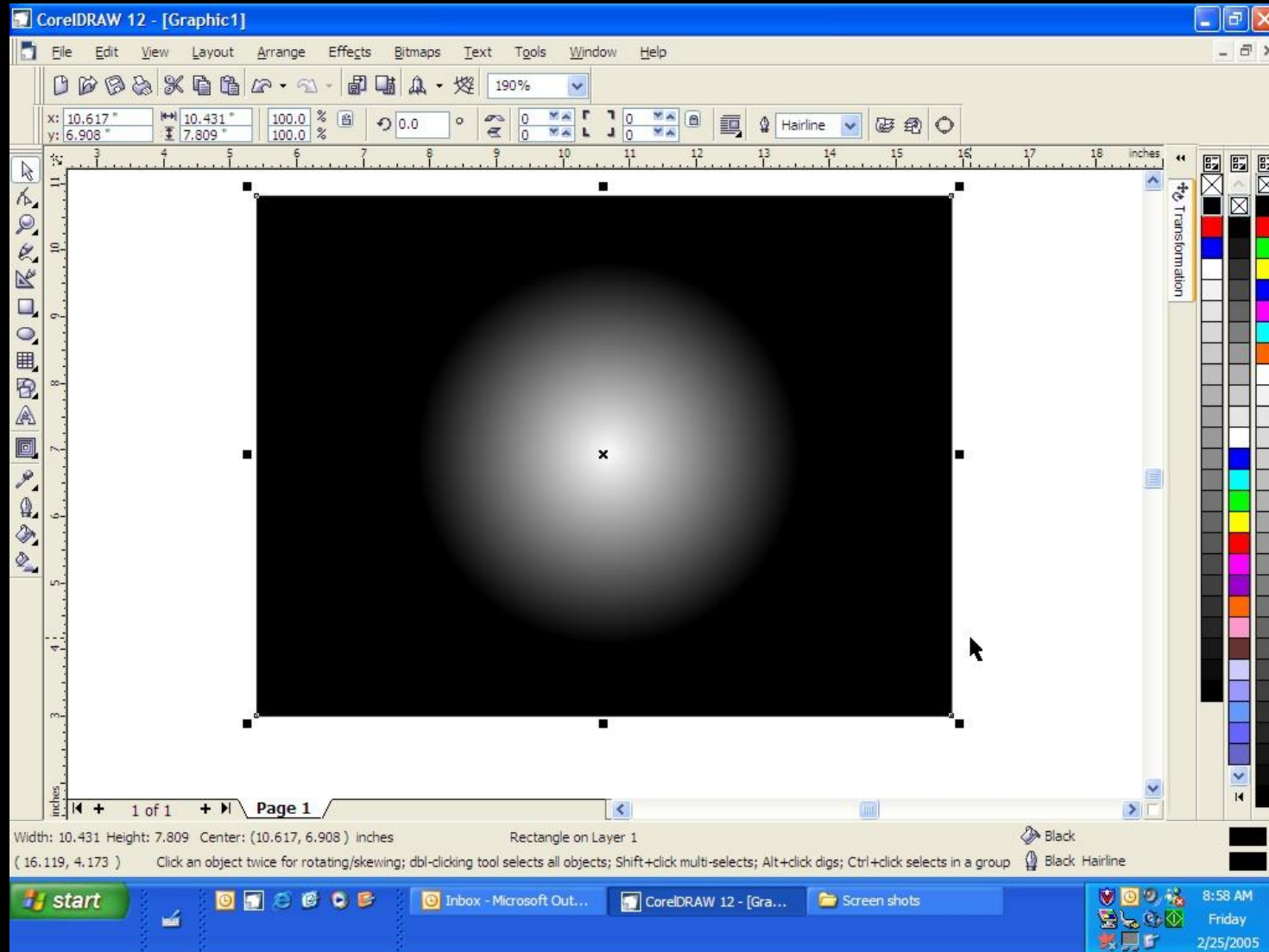
To Center



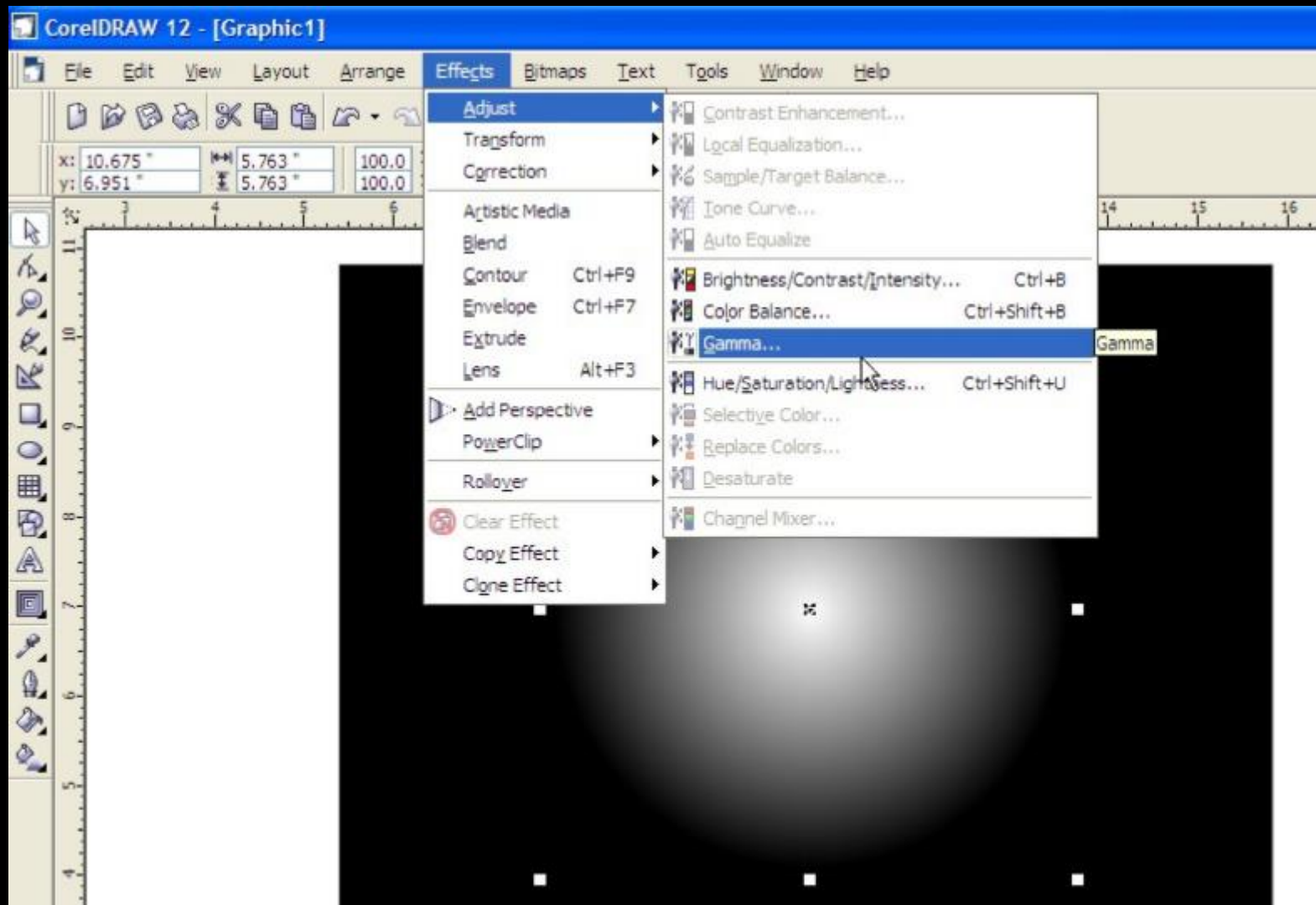
Corel will Contour Outline



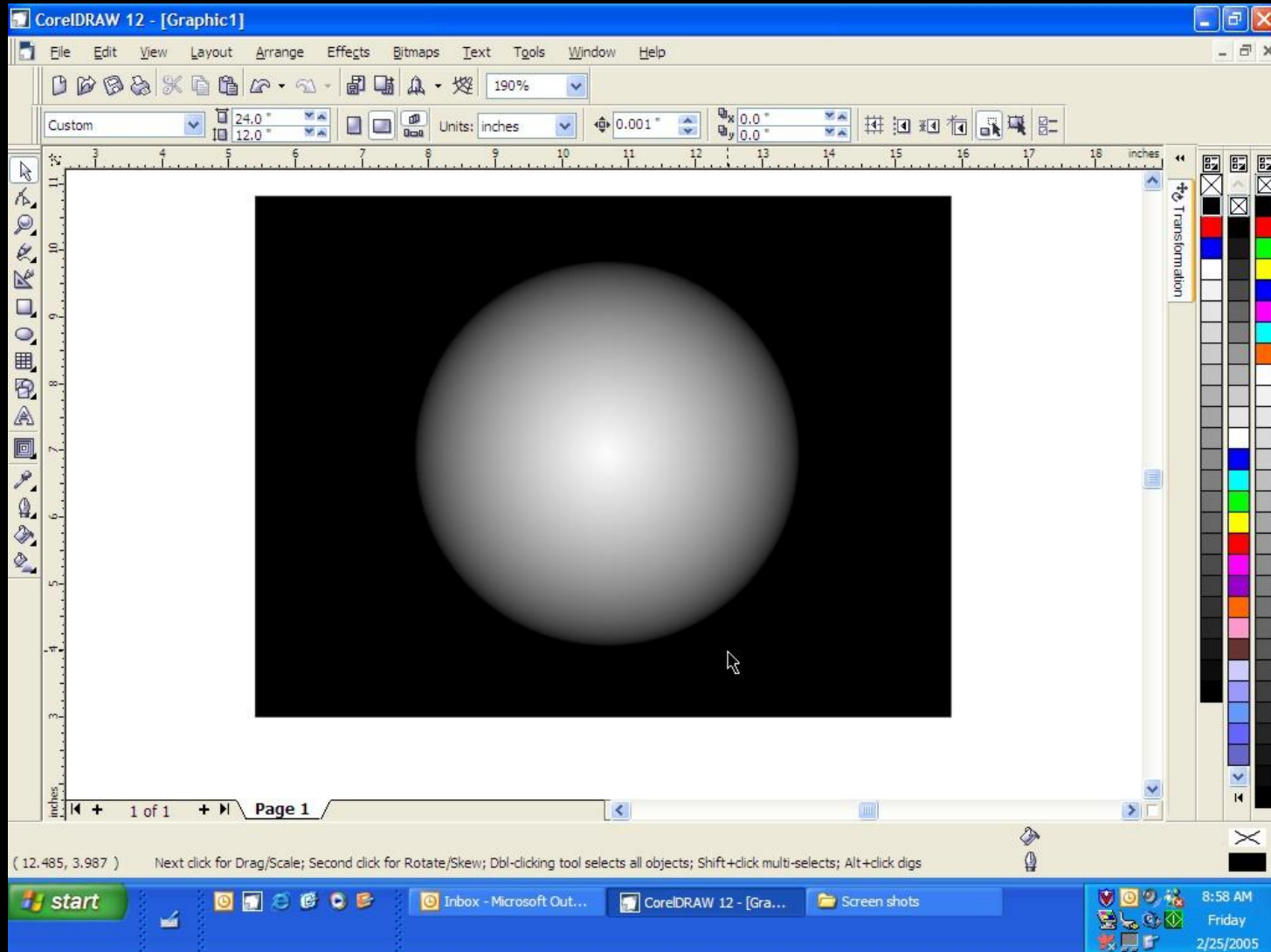
Add a Black Backing



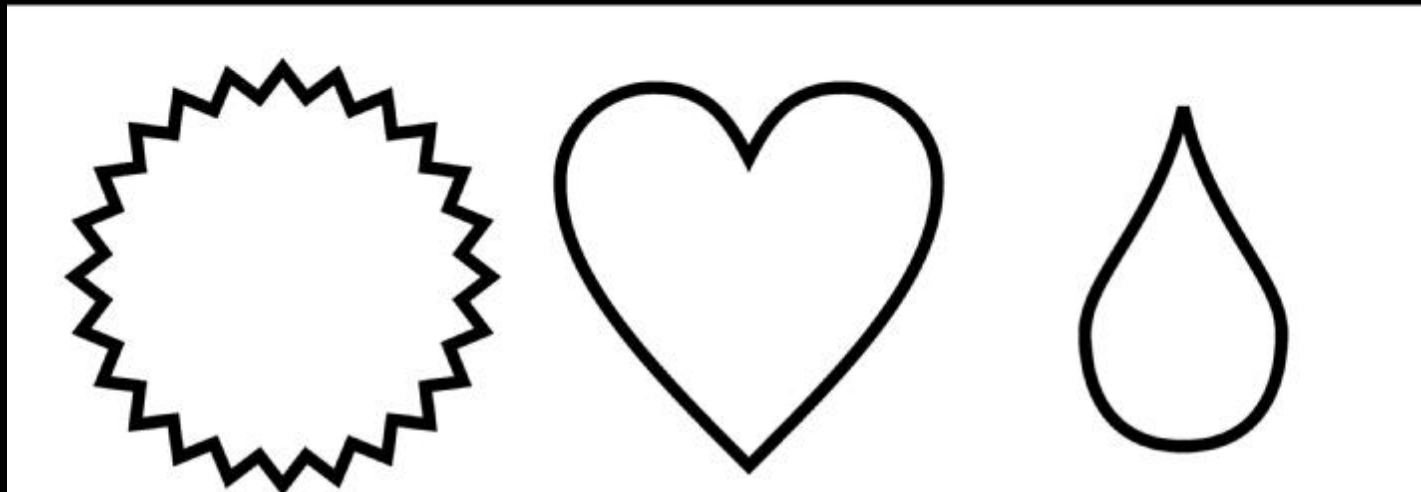
Increase Gamma for less depth in thinner woods



Gamma Corrected for Different Angles Curves and Depths of Engraving (If Necessary)



Repeat Process for any Outline Shape



Text

The logo for Universal Laser Systems Inc. is centered within a white rectangular area. It consists of a black horizontal oval. Inside the oval, the word "UNIVERSAL" is written in a large, bold, white, sans-serif font. Below it, the words "LASER SYSTEMS INC." are written in a smaller, white, sans-serif font, with each word separated by a space.

UNIVERSAL
LASER SYSTEMS INC.

Vectorized Logos

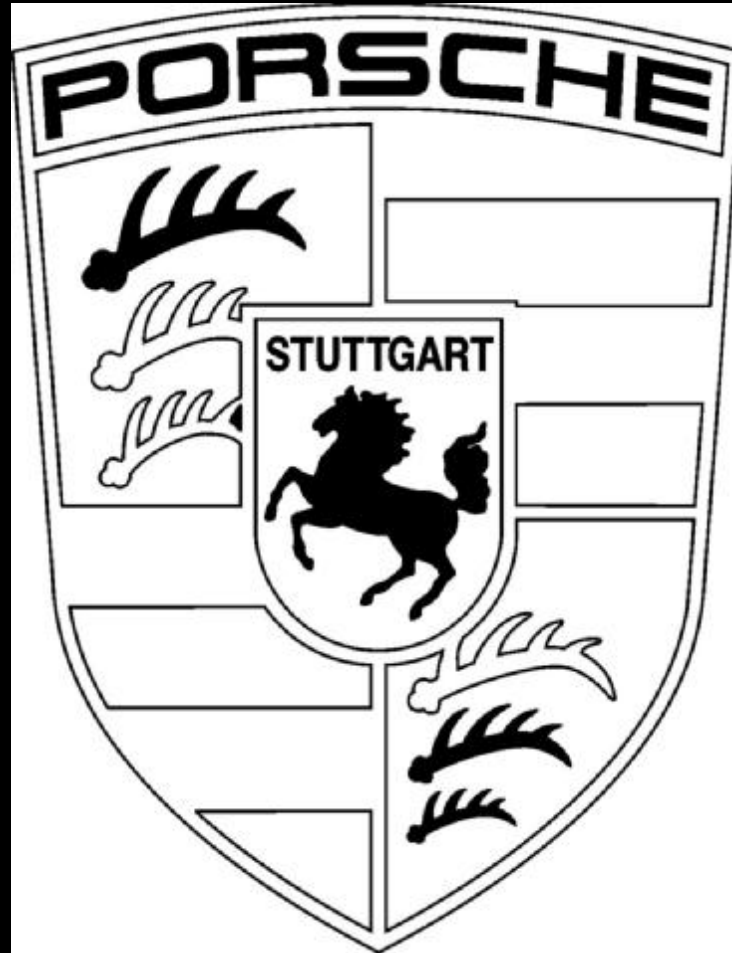


- **Clipart Type Logo**



- **Converted to 3D**

EXAMPLE LOGO



Converted to 3D



Engraved in a Maple Plaque



3D Tips:

- After you make a 3D image Convert to a 600 DPI Grayscale Bitmap by selecting the image, Selecting the dropdown menu “Bitmaps” then “Convert to Bitmap”.
- Engrave the image multiple times until desired depth is reached.